

204

WHO'S YOUR FRIEND

E. M. Grady.

SONG & CHORUS



WRITTEN BY
W. L. HOWE

AUTHOR OF
"WHY I KNOW YOU
ARE NOT ME" ETC. ETC.

MUSIC BY
JOS. E. HOWARD

Published by **G. W. SETCHELL** Washington St. 633
BOSTON

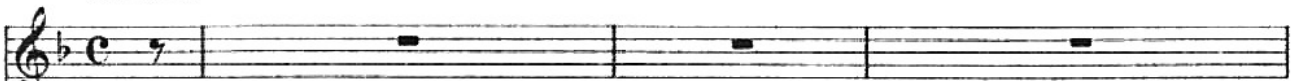
"WHO'S YOUR FRIEND?"

Words by ALLEN LOWE.

Music by HOWARD and EMERSON.

INTRO.

VOICE.



Moderato.

PIANO.



1. How of - ten have you no - ticed, now I
2. When walk - ing with a la - dy whom you
3. Of course you've all played pok - er that I

mf

know you have, When with a pret - ty girl you're out to dine. With
chanced to meet, Fer - haps you're not ac - quaint - ed with her name; You
know full well, There's some - thing most al - lur - ing in the game. But

sal-ads, fruits and i - ces, and a nice hot bird, And just one well iced bot - tle of good
run a - cross your sis - ter and she smiles so sweet, You turn your head a - way but just for
drawbacks there are plen - ty, for you can't know all The players though you stay there just the

wine. Some fel - low that you hard - ly know ex - cept to nod, His
shame. No an - swer can you think of, and you know quite well, The
same. I sat down with a par - ty of ve - ry charm - ing boys, My

card up to the sup - per room will send; In - sists on cut - ting in, the
line to which her ques - tion soon will tend; For she looks on with sur - prise, as she
mon - ey they soon got, a steal I fear; But as I went a - way, I

girl he'd like to win, And asks in tones en - tic - ing "Who's your friend?"
asks you with her eyes, The sim - ple lit - tle ques - tion, "Who's your friend?"
much re - gret to say, The words that passed a - mong them I did hear.

REFRAIN. Slow.

mf-ff

Tell me, now tell me, "Who's your friend?" Kind - ly
 2. Wont you
 3. Kind - ly

tell me and let the sub - ject end. Don't get

an - - gry, I real - ly wont of - fend,

Tip me on the qui - et, son - ny, Tell me "Who's your friend?" friend?"
 2. brother
 3. Bil - ly

rit. *ff* *ff*

1. & 2. 3. 1. & 2. 3.