

OPERATION

# 'N' EVERYTHING

SONG

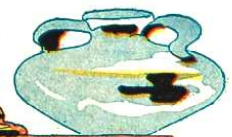
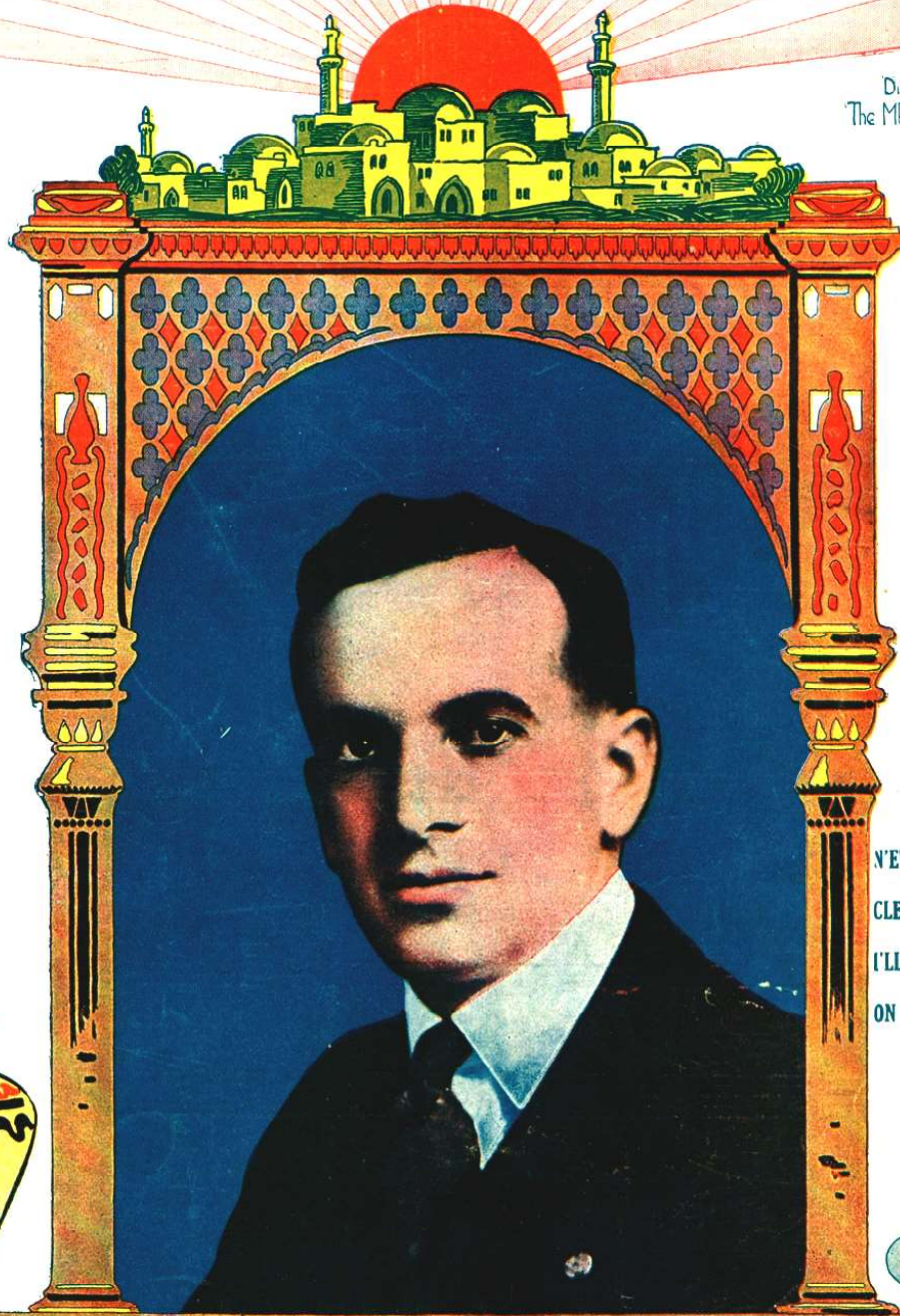
Lyric and Music by *BUD DeSYLVIA, GUS KAHN and AL. JOLSON*

## AL. JOLSON'S SONG HITS

# SIN-BAD

### at the WINTER GARDEN N.Y.

Direction  
The MESSRS SHUBERT



- 'NEVERYTHING . . . . .60
- CLEOPATRA . . . . .60
- I'LL SAY SHE DOES . . .60
- ON THE ROAD TO CALAIS .60

JEROME H. REMICK & CO. DETROIT NEW YORK

FARMER

# 'N' EVERYTHING

## SONG

Lyric and Music by  
 BUD De SYLVIA,  
 GUS KAHN & AL JOLSON

Moderato

PIANO

The piano introduction consists of two staves. The right hand starts with a series of eighth notes in a descending sequence, while the left hand provides a steady bass line with quarter notes. The tempo is marked 'Moderato' and the dynamics begin with a forte 'f'.

VOICE

I'm as nut-ty as a squirr'l  
 Lot's of oth-er girls I met

Vamp

mp

p

The vocal line is on a single staff, starting with a rest followed by the lyrics. The piano accompaniment is on two staves, featuring a 'Vamp' section with a melodic line in the right hand and a bass line in the left hand. Dynamics are marked as 'mp' and 'p'.

'Cause I've got my-self a girl who keeps me schem-ing And  
 Look'd real good to me and yet tho' they were clev-er They

The piano accompaniment for the second verse continues with the same melodic and bass line patterns as the first verse, supporting the vocal line.

Copyright MCMXVIII by JEROME H. REMICK & CO., New York & Detroit

523-4

Copyright, Canada, MCMXVIII by Jerome H. Remick & Co.

Propiedad para la Republica Mexicana de Jerome H. Remick & Co., New York y Detroit. Depositada conforme a la ley  
 Performing rights reserved

dream - ing all day long ——— I want to say she's got 'em  
nev - er made me fall ——— But then this girl's so diff' - rent

I could nev - er get a thrill Out of an - y girl un - - til ———  
When I think that she's all mine Lit - tle chills run up my spine ———

— I met this girl for whom I sigh ——— and this is why ———  
— It all seems too good to be true ——— I'm tell - ing you ———

## CHORUS

She's got a pair of eyes that speak of love 'n' Ev'ry-thing — She's got a

*mp-f*

smile like an - gels up a - bove 'n' Ev' - ry - thing — The lit - tle

bird-ies start to sing — When they see her they think it's spring — Like A - pril

show - ers — She makes the flow - ers — Jus' seem to grow and Ev' - ry - thing — She's got the

cu-test lit - tle dim-pled hand 'n' Ev'-ry-thing \_\_\_\_\_ A pret-ty

fin-ger for a wed-ding band 'n' Ev'-ry-thing \_\_\_\_\_ And if she'll be my lit-tle wife..

\_\_\_\_\_ We'll lead the sim-ple, life \_\_\_\_\_ And we'll raise a lot of ducks and

\_\_\_\_\_ cows and geese and Ev'- ry-thing \_\_\_\_\_ She's got a \_\_\_\_\_ *D.C.*