

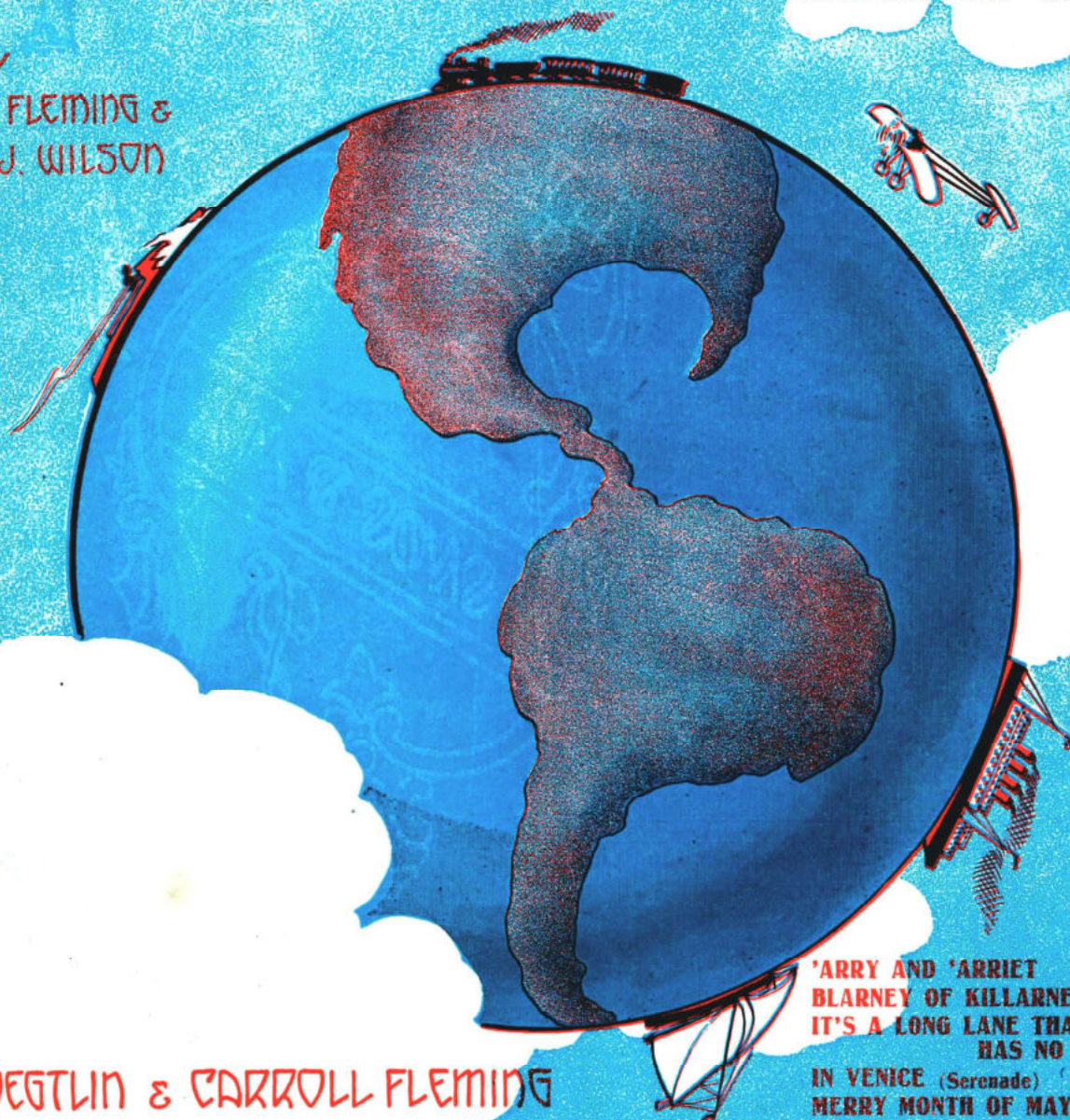
IT'S A LONG LANE THAT HAS NO TURNING

VOCAL AND INSTRUMENTAL NUMBERS FROM
THE MESSRS. SHUBERT'S PRODUCTION

AROUND THE WORLD

AT THE NEW YORK HIPPODROME - SEASON 1911-12

STAGED BY
CARROLL FLEMING &
WILLIAM J. WILSON



BOOK BY
ARTHUR VOEGTLIN & CARROLL FLEMING
LYRICS & MUSIC BY
MANUEL KLEIN

'ARRY AND 'ARRIET	60
BLARNEY OF KILLARNEY	60
IT'S A LONG LANE THAT HAS NO TURNING	60
IN VENICE (Serenade)	60
MERRY MONTH OF MAY, THE (Maypole Dance)	60
MY OLD TOWN	60
PRETTY LITTLE SUNSHADE	60
SWEET SENORITA	60
SELECTION INSTRUMENTAL	1.00
THE ROYAL DURBAR Vocal March, Two-Step (OUR ARMY ON PARADE)	60

M. WITMARK & SONS
NEW YORK - CHICAGO - SAN FRANCISCO - LONDON - PARIS

Theatrical and Music Hall Rights of these Songs are fully
protected by Copyright and MUST NOT be used for pub-
lic performances without permission.

It's A Long Lane That Has No Turning.

Lyric and Music
By MANUEL KLEIN.

Andante.

The piano introduction is in 2/4 time, marked 'Andante.' and 'mf'. It features a melody in the right hand with a trill on the first measure and a 'rall.' marking on the fourth measure. The left hand provides a simple harmonic accompaniment.

The first line of the song features a vocal melody in the right hand and piano accompaniment in the left hand. The lyrics are: "For years I have al-ways want-ed to meet a lit-tle girl like I some-how have al-ways fan-cied a bach-e-lor I'd sure-ly". The piano part is marked 'mf'.

The second line of the song continues the vocal melody and piano accompaniment. The lyrics are: "you, be, And I knew some hap-py day that good I eith-er would-n't do for the". The piano part includes a triplet in the first measure.

The third line of the song concludes the vocal melody and piano accompaniment. The lyrics are: "luck would come my way, And that I should find a sweet-heart true. I've girls I tried to woo, Or they did-n't make a hit with me. But". The piano part features a rising line in the right hand.

trav eled in ev - 'ry land, dear, Through North and South and East and
now that at last I've met you, I want to have you al-ways

West. But no sweet-heart could I find, nev - er
near. And I tell you in ad-vance that I'm

quite make up my mind Just the sort of girl I loved the best. But
glad to have the chance Just to gen - tly whis-per in your ear, - That

REFRAIN.

It's a long lane that has no turn-ing, And I think I can plain-ly

mp - *f*

see That the girl I love is learn-ing just to care a bit for

cresc. *f-ff*

me. Oh yes, It's a long lane that has no turn-ing, And the

dim. *mp-f*

say-ing is old but true, But I would- n't care how

long it was if I could walk through it with you. It's a you.

1. 2.

sfz