

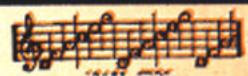
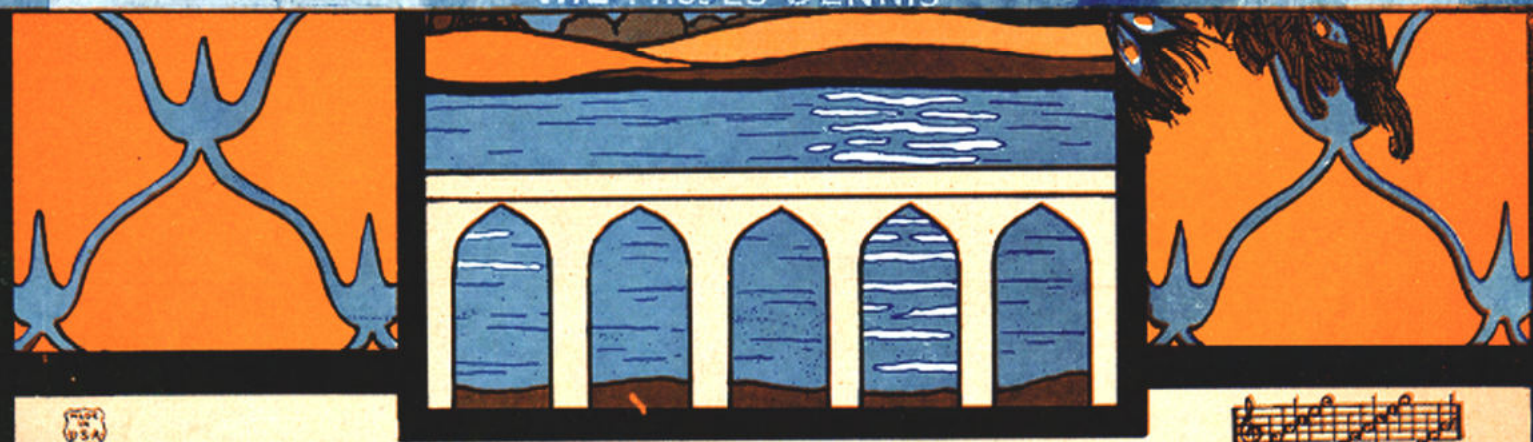
B ⁸⁵⁰ THE SHALIMAR

WORDS by
TED KOEHLER

MUSIC by
FRANK MAGINE
AND
DEL DELBRIDGE



FEATURED BY
THE MISSES DENNIS



Irving Berlin, Inc.
MUSIC PUBLISHERS
1607 Broadway New York

DETROT

BY THE SHALIMAR

Words and Music by { FRANK MAGINE
DEL DELBRIDGE
TED KOEHLER

Piano

f *p staccato*

The piano introduction consists of two staves. The right hand starts with a series of eighth notes, while the left hand plays a steady bass line. The music is in a minor key and features dynamic markings of *f* and *p staccato*.

Voice

Twilight is closing the flowers my love,
Soft scented breezes are telling the palms,

p

The first line of the song features a vocal melody in the treble clef and piano accompaniment in the grand staff. The piano part is marked *p*. The lyrics are: "Twilight is closing the flowers my love, / Soft scented breezes are telling the palms,"

Soon silver stars will be twinkling above,
Night soon will hold all the world in her arms,

The second line of the song continues the vocal melody and piano accompaniment. The lyrics are: "Soon silver stars will be twinkling above, / Night soon will hold all the world in her arms,"

Some mystic Power is lurking it seems, This is a
Waters a glow seem to murmur your name, Thrilling and

The third line of the song concludes the vocal melody and piano accompaniment. The lyrics are: "Some mystic Power is lurking it seems, This is a / Waters a glow seem to murmur your name, Thrilling and"

night of en - chantment and dreams, Love time is bidding the long day a - dieu,
 set - ting my heart more a - flame, Love birds are call - ing to hearts that are true,

— Come dear - est one I am wait - ing for you.
 — Hast - en my own I am wait - ing for you.

rit.

REFRAIN

By the Shal - i - mar In my arms I'll

p-f

hold you, with a burn - ing love un - dy - ing

for you I'm sigh - - ing, While the world's at

rest We will dream to - geth - - er

Could this night but last for - ev - - er, By the Shal - i -

1. mar.

2. mar.

pp