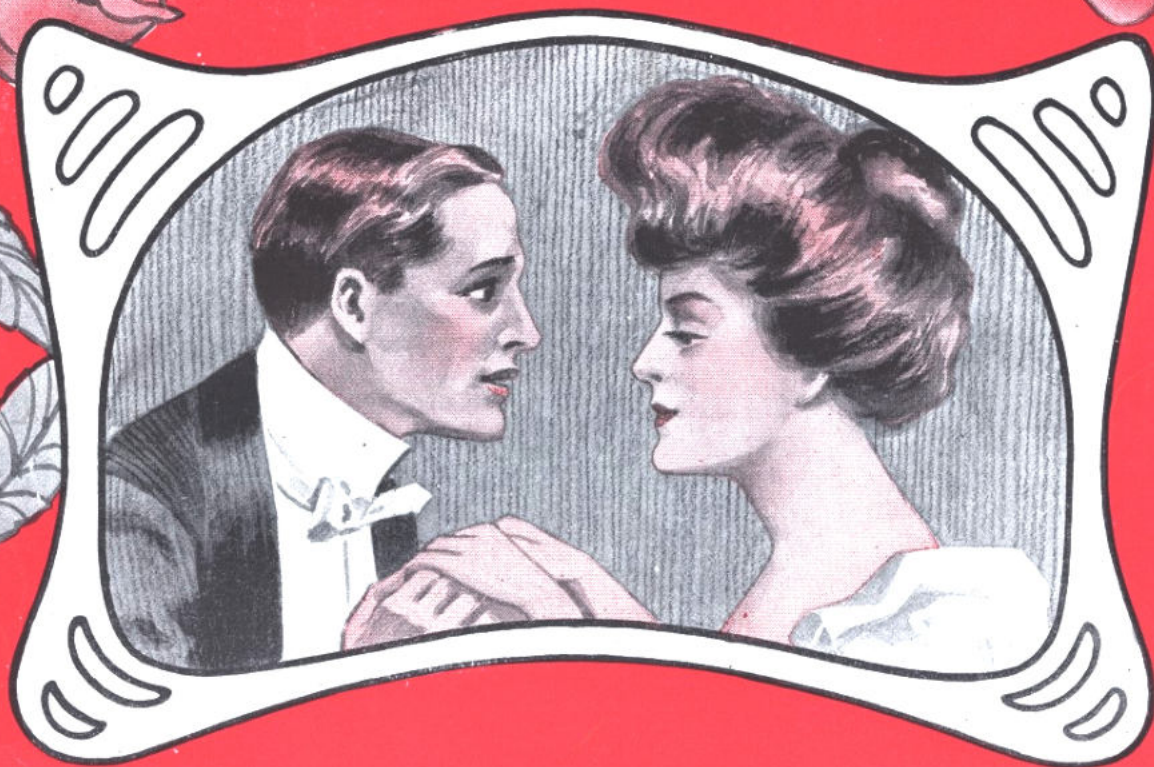


I LIKE YOU TOO

SONG



Words by
HARRY WILLIAMS

Music by
EGBERT VAN ALSTYNE

5

JEROME H. REMICK & CO. ~ NEW YORK ~ DETROIT



I Like You Too.

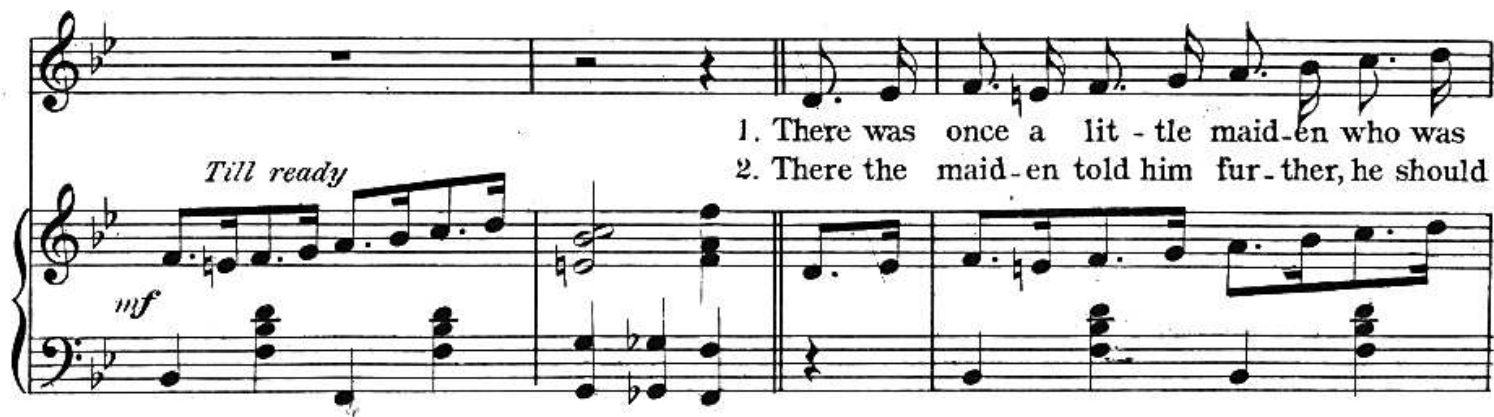
Words by
HARRY WILLIAMS.

Music by
EGBERT VAN ALSTYNE.

Moderato.



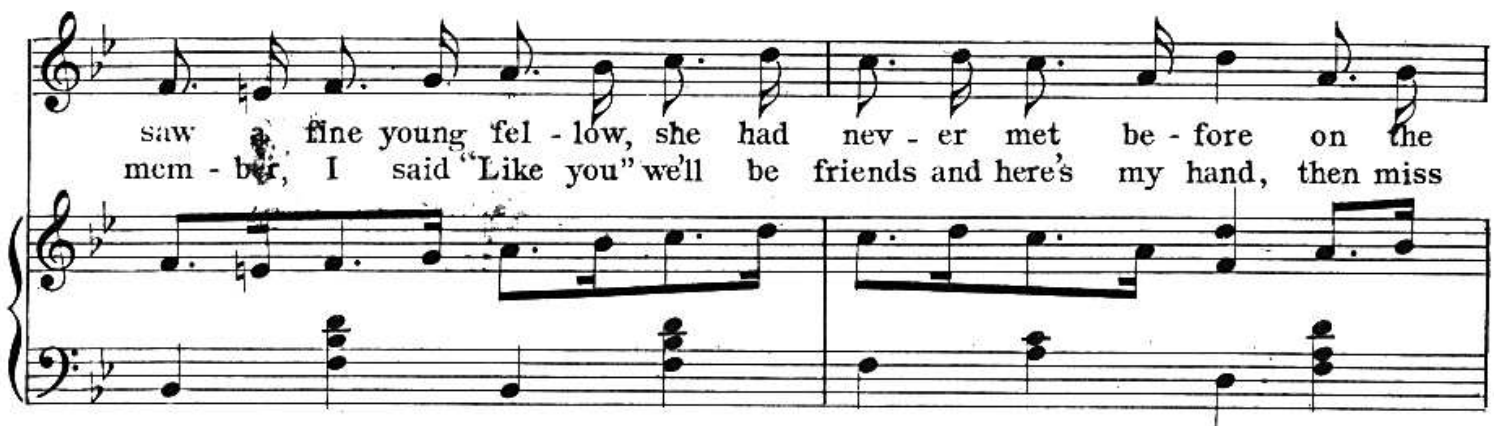
Piano introduction in G minor, 3/4 time, marked Moderato. The piece begins with a treble clef and a bass clef. The treble staff contains a melodic line starting on G4, moving through A4, Bb4, and C5. The bass staff provides harmonic support with chords and single notes.



Vocal entry and piano accompaniment. The vocal line begins with a rest, then enters on the first line of the first system. The piano accompaniment is marked *mf* and features a rhythmic accompaniment of eighth and sixteenth notes. The lyrics are: 1. There was once a lit - tle maid - en who was 2. There the maid - en told him fur - ther, he should



Vocal line and piano accompaniment. The vocal line continues with the lyrics: strol - ling on the shore o'er the sand, it was grand; There she not mis - un - der stand, love you know has to grow. Just re -



Vocal line and piano accompaniment. The vocal line concludes with the lyrics: saw a fine young fel - low, she had nev - er met be - fore on the mem - ber, I said "Like you" we'll be friends and here's my hand, then miss

sand, un - der - stand And he gave her such a look, it made her
 Jo whis - pered low, I've a heart like oth - er maid - ens, but it

heart go pit a pat, pit a pat, think of
 was - n't meant for you, why the stare, don't you

that; Then she drooped her dream - y eye and she
 care, Love is sweet but if it ends, what is

asked him with a sigh as he gent - ly raised his hat.
 left in life but friends, that is why I hum this air.

CHORUS

Do you think you'd like to meet me, Do you think you'd like my style, Do you

think you'd like to greet me with a good old fashioned smile, Do you

think you'd like to like me, like a friend, who's good and true, If you

do, I'd like to tell you that I like you too.

I like you too. 3.