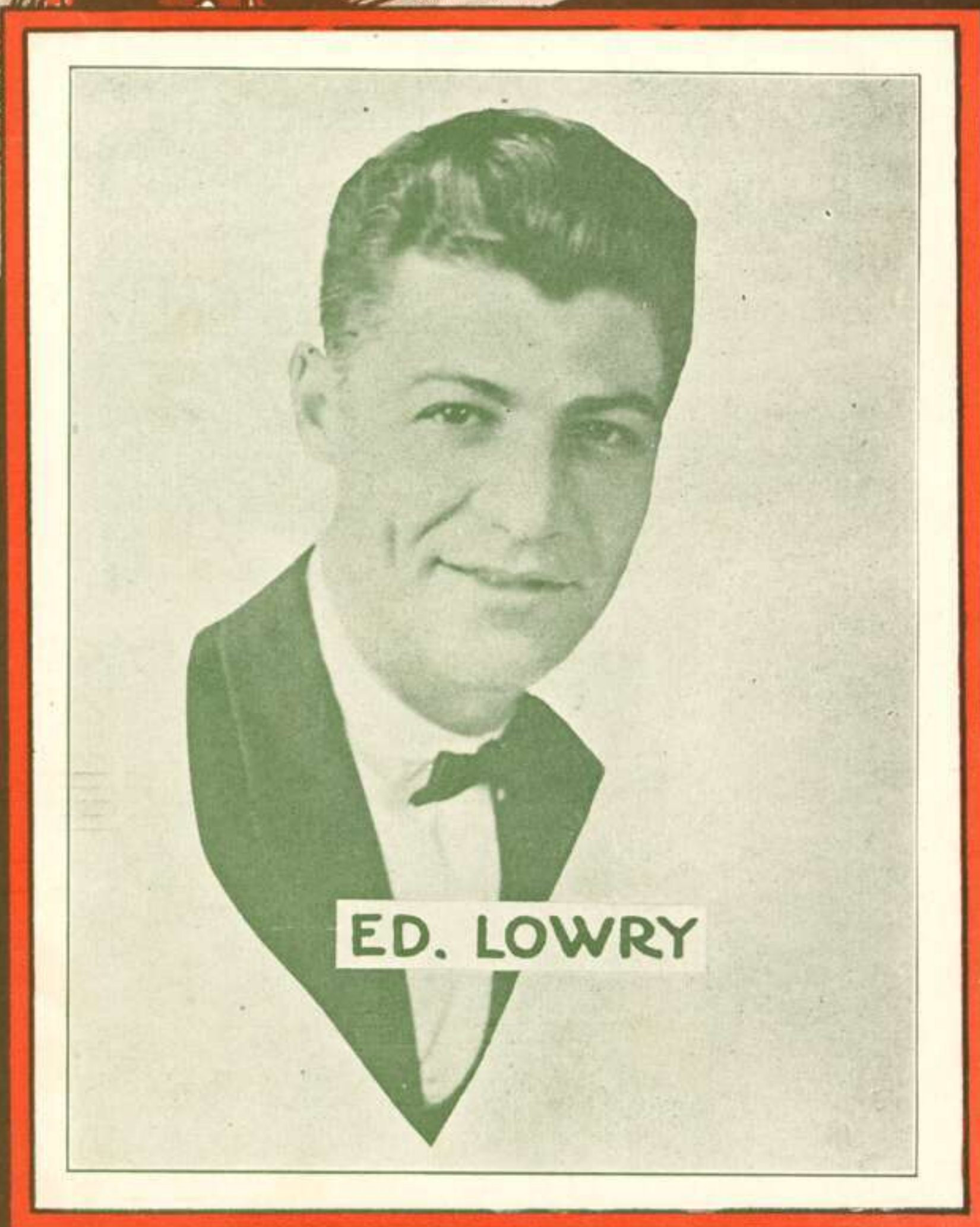
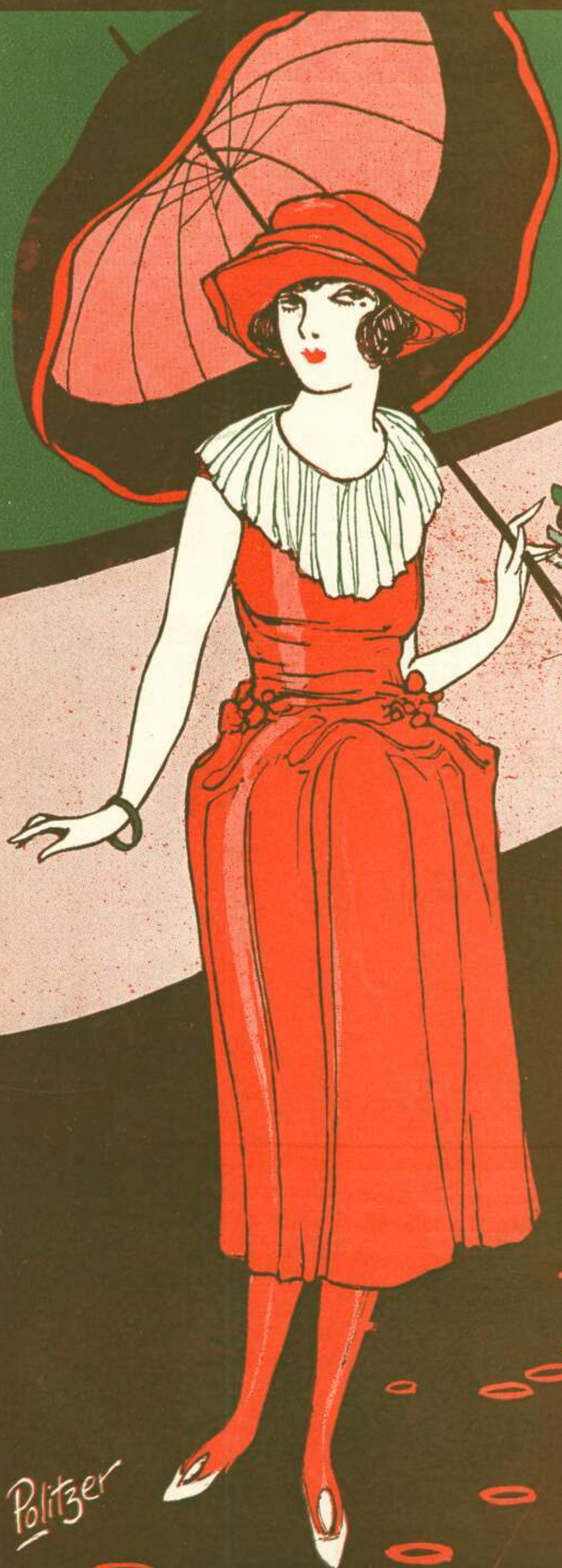


# CLA-WENCE

(DON'T TWEAT ME SO WUFF)

BY JOE MANUEL,  
MACK HENSHAW  
AND  
HARRY JENTES



ED. LOWRY

Politzer

MUSIC PUBLISHERS  
COR. BROADWAY & 47th STREET  
New York

MADE IN U.S.A.



Try this over on your Piano.

# Stay Home, Little Girl, Stay Home

By LEW BROWN and  
JAMES F HANLEY

## CHORUS

Stay home lit-tle girl, stay home \_\_\_\_\_ Dont roam, lit-tle girl, dont  
roam, \_\_\_\_\_ The one who would lure you from those you love so, Will  
take you and fool you and then let you go, The girl who stays  
home is a fool they may say, But she's just the kind that they

*p-f*

Copyright MCMXXIII by Shapiro, Bernstein & Co. Inc. Cor. Broadway & 47th Street, New York  
International Copyright Secured  
Propiedad Asegurada Para La Republica Mexicana MCMXXIII Todos Los Derechos Reservados  
All Rights Reserved

Complete Copies may be had where you bought this



# CLA-WENCE

(Don't Tweak Me So Wuff)

By JOE MANUEL,  
MACK HENSHAW  
and HARRY JENTES

Lively

Piano introduction in 2/4 time, marked 'Lively' and 'f'. The music features a rhythmic pattern of eighth notes in the right hand and quarter notes in the left hand, with a key signature of one sharp (F#).

Continuation of the piano introduction, marked 'Till ready'. It includes a section marked 'sfz' (sforzando) and another marked 'mf' (mezzo-forte). The music concludes with a repeat sign.

Vocal line and piano accompaniment for the first verse. The vocal line is in treble clef, and the piano accompaniment is in bass clef. The music is marked 'mp' (mezzo-piano). The lyrics are: "There's a girl I know who loves to ride in motor cars She / One day Clarence took his little girlie for a ride He".

Vocal line and piano accompaniment for the second verse. The vocal line is in treble clef, and the piano accompaniment is in bass clef. The lyrics are: "knows her P's and Q's But she can't pronounce her R's / start-ed in to speed Up a-long the Riv-er-side".

Copyright MCMXXIII by Shapiro, Bernstein & Co. Inc. Cor. Broadway & 47th Street, New York

International Copyright Secured

All Rights Reserved

Depositado conforme con las leyes de los Países de Sud y Central America y Mexico

Depositado en el año MCMXXIII por Shapiro, Bernstein & Co. Inc. Nueva York, E.U.de A.



Cla - rence is her beau and when he takes her for a spin He  
 As he whis-per'd in her ear he'd kiss her on the cheek She

loves to tease, he loves to squeeze, But she al - ways shouts at him:-  
 looked at him and then she said: "You are fwesh - er than the Sheik:-"

CHORUS

Cla - WENCE, - dont tweek me so wuff - Cla - WENCE, - e -

nough is e - nough - I like speed and all the fun that's in it  
 Not so fast, your dwiv-ing makes me shiv-er



But we - mem - ber that there al - ways is a lim - it Cla - WENCE, - don't  
 Watch your bwakes or well be wid - ing in the wiv - er

lose your con - twol — Or I'll tell my pa —

You're so bwave and so wo - man - tic I'm a - fwaid you'll dwive me fwan - tic  
 You are in - no - cent, you look it You are stwaight but you dwive cwook - ed

Cla - WENCE, - don't go too far. far. —



# TRY THESE OVER

**YOUR MUSIC DEALER** CARRIES THESE SONG HITS  
for **YOUR PIANO, PHONOGRAPH**  
or **YOUR PLAYER PIANO.**

## LAST NIGHT ON THE BACK PORCH

( I LOVED HER BEST OF ALL )

The Big College Song Hit



I love her in the morn - ing And I love her at night I love her, yes I love her

Copyright MCMXXIII by Skidmore Music Co. Inc.

## WHEN IT'S NIGHT-TIME IN ITALY IT'S WEDNESDAY OVER HERE

That Great Comedy Idea



When it's night-time in It - a - ly It's Wednes-day o - ver here When it's fish day in Ger - ma - ny

Copyright MCMXXIII by Shapiro, Bernstein & Co. Inc.

## STAY HOME, LITTLE GIRL, STAY HOME

The Waltz Ballad Success

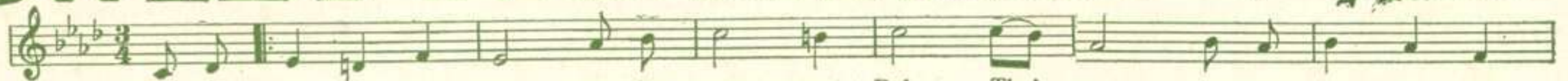


Stay home lit-tle girl, stay home Don't roam, lit-tle girl, don't roam, The one who would lure you

Copyright MCMXXIII by Shapiro, Bernstein & Co. Inc.

## SWEET PAL

A Song That Touches The Heart



You've been faith - ful and true thru the years sweet Pal, Tho' time left its mark on your

Copyright MCMXXIII by Shapiro, Bernstein & Co. Inc.

## SAY IT WITH A UKULELE

The Hit of "Artists and Models"

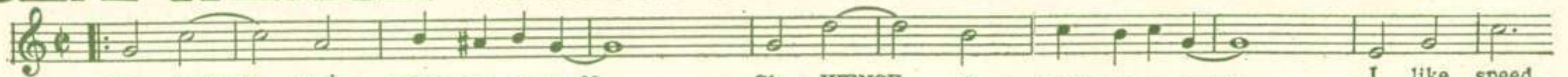


Say it with a Uk - u - le - le, Lay a - side the fid - dle and the bow, Strum a tune from Sun - ny

Copyright assigned MCMXXIII to Skidmore Music Co. Inc.

## CLA-WENCE ( Don't Tweat Me So Wuff )

The Novelty of the Season



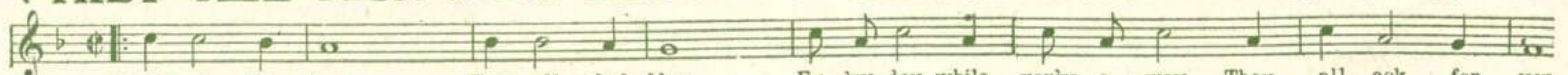
Cla - WENCE, don't tweat me so wuff, Cla - WENCE, e - nough is e - nough, I like speed

Copyright MCMXXIII by Shapiro, Bernstein & Co. Inc.

## DOWN ON THE FARM

( THEY ALL ASK FOR YOU )

A Country-wide Sensation

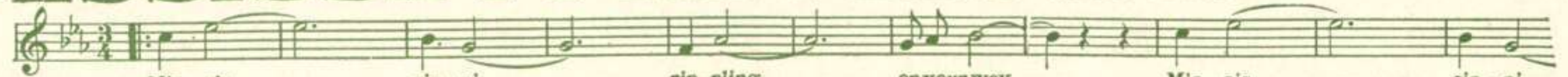


Down on the farm They all feel blue Ev - ry day, while you're a - way They all ask for you

Copyright MCMXXIII by Skidmore Music Co. Inc.

## MISSISSIPPI RIPPLES

MARY EARL'S ANNUAL  
WALTZ CREATION.



Mis - sis - sip - pi, rip - pling on your way, Mis - sis - sip - pi

Copyright MCMXXII by Shapiro, Bernstein & Co. Inc.

## LONESOME CINDERELLA

FANNY BRICE'S HIT in the ZIEGFELD FOLLIES

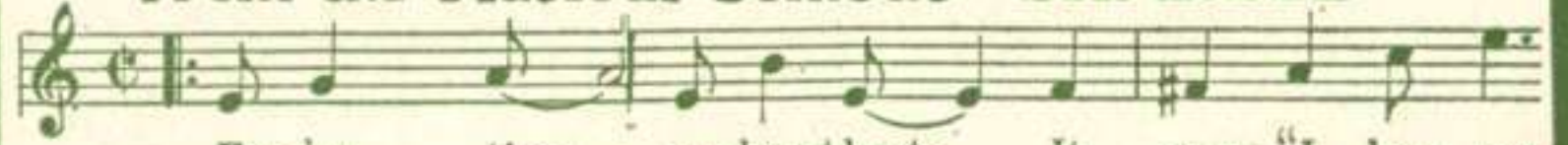


I'm a lone - some Cin - de - rel - la Looking for a

Copyright MCMXXIII by Shapiro, Bernstein & Co. Inc.

## HEART BEATS

From the Musical Comedy "SHARLEE"



Ev - ry time my heart beats, It says "I love you

Copyright MCMXXIII by Shapiro, Bernstein & Co. Inc.

THE

# GEM DANCE FOLIO

America's Standard

for Piano Solo only

1924

JUST PUBLISHED  
Price 50¢ Postpaid.