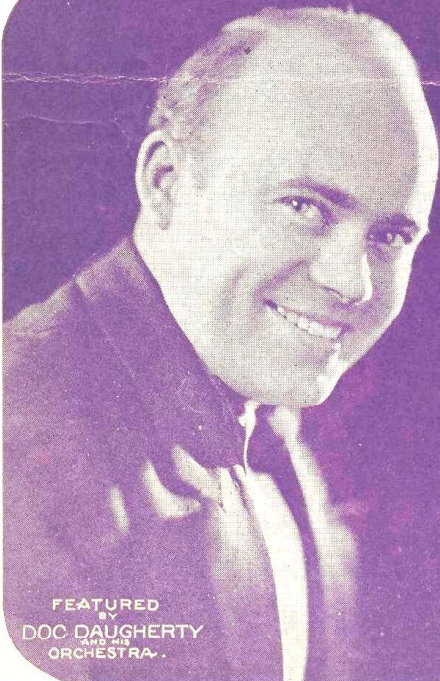


ALL THAT I'M ASKING IS SYMPATHY

WITH UKULELE
ACCOMPANIMENT



EARL



FEATURED
BY
DOC DAUGHERTY
AND HIS
ORCHESTRA

by
BENNY DAVIS
and
JOE BURKE
Writers of
"CAROLINA MOON"

JOE MORRIS MUSIC Co.
MUSIC PUBLISHERS
1587 BROADWAY, NEW YORK CITY

All That I'm Asking Is Sympathy

Ukulele Arr. by
MAY SINGHI BREEN
"The Ukulele Lady"

Tune Ukulele or
BANJULELE BANJO
A D F# B
Put Capo on 1st Fret

By BENNY DAVIS and
JOE BURKE
Writers of Carolina Moon

Valse andante

Introduction for piano, 3/4 time, key of B-flat major. The piece begins with a dynamic marking of *f* (forte). The melody is played in the right hand, and the accompaniment is in the left hand. The introduction consists of four measures.

VOICE

Now that ev - 'ry - thing is
Af - ter teach - ing me to

Piano accompaniment for the first vocal line, starting with a dynamic marking of *mp* (mezzo-piano) and a *rit.* (ritardando) marking. The piano part includes a guitar chord diagram for G7.

o - - ver, Have a lit - tle Sym - pa - thy,
love you, Who will teach me to for - get,

Piano accompaniment for the second vocal line, continuing the melody and accompaniment from the previous section.

Tho' you may be glad it's o - - ver,
True as all the stars a - bove you,

Piano accompaniment for the third vocal line, concluding the piece with a final chord.

Leave me with a smile, dear, Lin - ger just a while, dear.
I'm still mad a - bout you, I'll be lost with - out you.

CHORUS

You were all I had, Now I feel so bad,

mp - f

All that I'm ask - ing is Sym - pa - thy; _____ Don't know what I'll

do, I ap - peal to you, All that I'm ask - ing is

Sym - pa - thy. ————— Al - tho' you've brok - en your vow, I've grown so

used to you now, I know I'll miss you some-how, I love you, I need you;

So be - fore we part, Spare my ach - ing heart, All that I'm

ask - ing is Sym - pa - thy. Sym - pa - thy. —————

1. 2. rit.