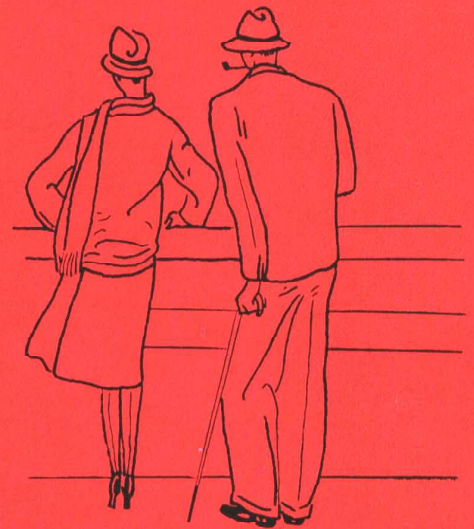
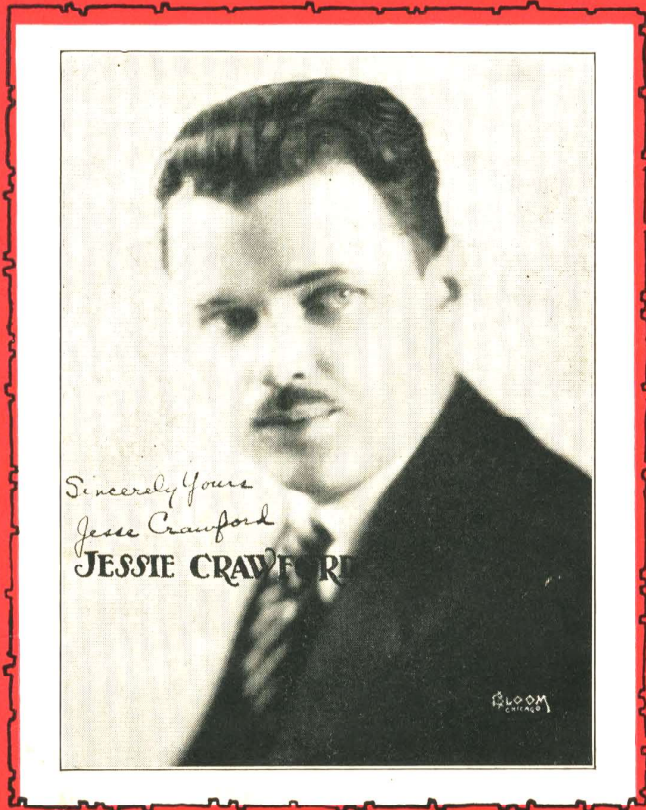


WHEN I AM WITH YOU

by
Larry Conley



WITH UKE



ARRANGEMENT

Published By
LARRY CONLEY INC.
MUSIC PUBLISHERS
SHUBERT RIALTO THEATRE BLDG - ST. LOUIS, MO.

MADE IN U.S.A.

"When I Am With You"

Ukulele in D

Tune

Uke thus: A D F# B

when played with Piano. Tenor Banjo, Mandola, Guitar etc. Play chords marked over diagrams.)

By LARRY CONLEY

Moderato

Lov - a - ble, kiss - a - ble, dear lit - tle one, I love you,
I'll con - fess hap - pi - ness nev - er could be with - out you,

Could - n't you, would - n't you tell me you love me too.
Gee, but I know that I'd be migh - ty lone - some too.

C G- G F#

Don't be a fraid to con - fess, I want to hear you say yes.
 When we're to - geth - er I'm glad, An - y old weath - ers not bad,

A7 D7 G- D7

Hon - est and true, I could - n't do - with - out you.
 Tho it may rain I won't com - plain or be blue.

CHORUS G G A7

An - y - where you want to be, An - y - where on land or sea,

p - mf

D7

Will look migh - ty good to me, When I am with

G C7 G

you. An - y - time you're all up - set An - y - time you

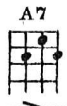
A7 D7

fuss and fret, Love and kiss - es you will get,

G C7 G G7

When I am with you. I'll be there to share your

joys and your cares, I'll un - der - stand how you feel, We'll be al - ways



schem - ing some pret - ty dream Our hap - pi - ness will be



real, You're the one that I a - dore, — You're the one I'm wait - ing for. —



I could nev - er ask for more, — When I am with



you. An - y - where you you. —