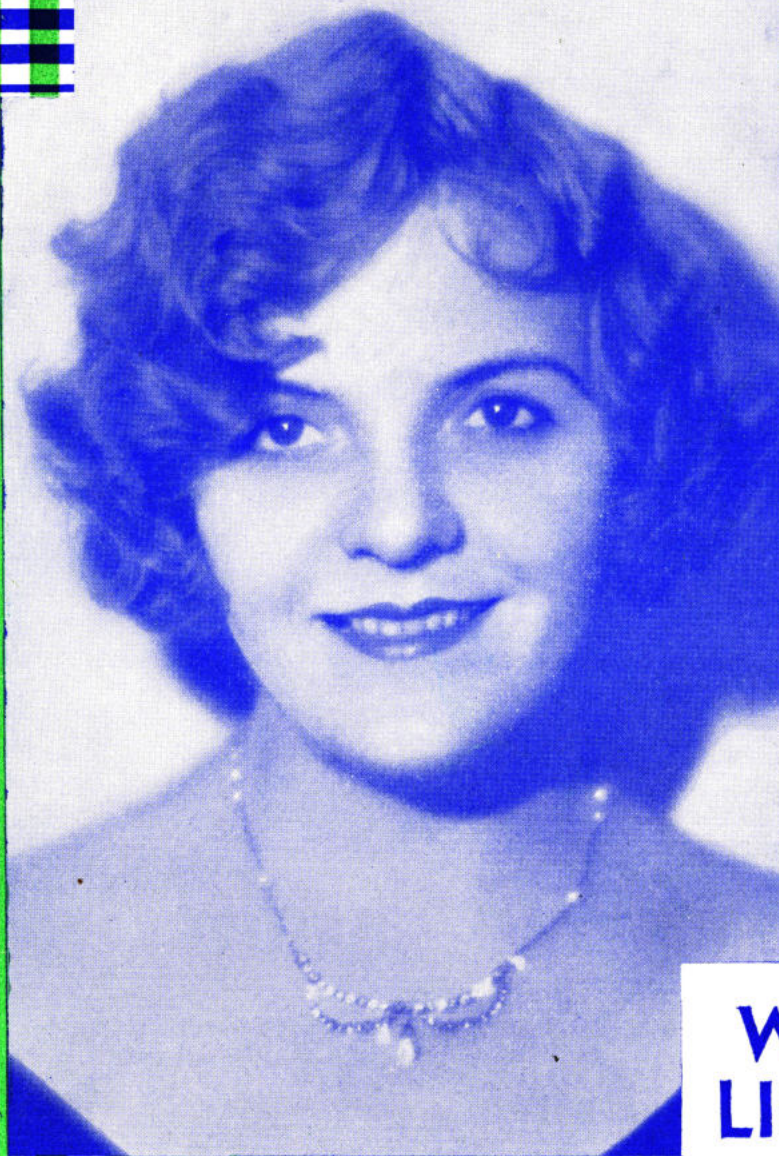


A DARN FOOL WOMAN LIKE ME



Ukulele Acc.

A DARN FOOL
WOMAN LIKE ME

WATCHING MY
DREAMS GO BY

Lyrics by
AL DUBIN

BY ARR. WITH GENE AUSTIN, INC.

Music by
JOE BURKE

Sung by

**WINNIE
LIGHTNER**

in

**SHE COULDN'T
SAY NO**

with **CHESTER MORRIS**

**A WARNER BROS. and
VITAPHONE PICTURE**

Directed by Lloyd Bacon



M. WITMARK & SONS

NEW YORK
Printed in U.S.A.

A Darn Fool Woman Like Me

Lyric by
AL. DUBIN

Tune Uke thus $\text{B}\flat \text{E}\flat \text{G C}$ when used with Piano
Ukulele in D

Music by
JOE BURKE

Moderato

Vamp

Andante moderato

me,
find,

Who will al-ways hide their tears, So no - bod - y can see;
I can see your faults "Big Boy", Still I don't seem to mind;

Copyright MCMXXIX by M. Witmark & Sons
International Copyright Secured

ALL RIGHTS RESERVED
INCLUDING PUBLIC PERFORMANCE FOR PROFIT

8777

M.W. & Sons, 17526 - 3

What have I to gain, Lov - ing you in vain?
An - y - thing you do, An - y - thing you say,

Why I'm that way, I can nev - - er ex - plain.
Is all right for I'm just fun - - ny that way!

Refrain

Slowly and with expression

Some-times I feel just like a moth - er and you're a kid on my knee,

rit. *a tempo*

That's the way with a darn fool woman like me, ——— Gee, Some-times I'm so

low-down, Be - cause you want me to be, But that's the way with a darn fool woman like

me, And all I've got you can have, 'Cause I can't say no,

I know that you can't be true, Still I love you so; And tho' they

say you're "good for noth - ing", The "good" is all I can

see, 'Cause that's the way with a darn fool wo - man like

me. Some - times I me.

a tempo

rit.

ffs