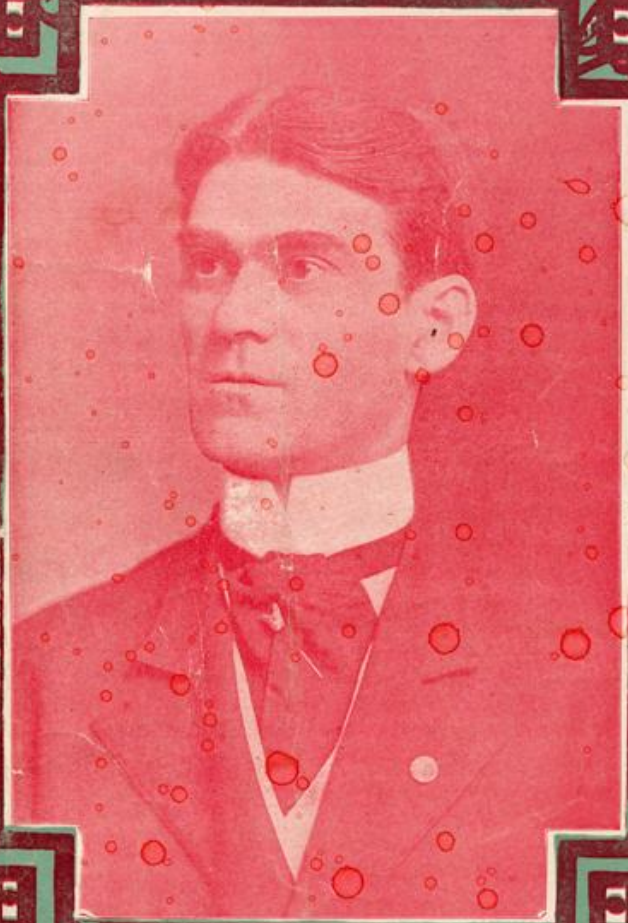


*Carroll Kelly*

# NOT-BECAUSE-YOUR HAIR-IS-CURLY-



WORDS & MUSIC  
BY BOB ADAMS

Johnny Fogarty's  
BIG HIT  
— IN —  
His Highness The Bey

# Not Because Your Hair Is Curly

BOE ADAMS

Arr. by G.W. Ashleigh

Moderato con moto

Introduction for piano, marked *f*. The music is in 3/4 time and begins with a series of chords in the right hand and a simple bass line in the left hand.

Vocal line and piano accompaniment for the first verse. The piano part is marked *p*. The lyrics are: "I'm so ve - ry lone - some dear; \_\_\_\_\_ You went a - way \_\_\_\_\_ just yes - ter - You look aw - ful good to me, \_\_\_\_\_ You bet you do! \_\_\_\_\_ and that is

Vocal line and piano accompaniment for the second verse. The lyrics are: "day, \_\_\_\_\_ How I wish that you were near \_\_\_\_\_ Sweet things to true. \_\_\_\_\_ You're the on - ly one I see, \_\_\_\_\_ So don't you

Copyright MCMVI by Victor Kremer Co.

English copyright.

say, \_\_\_\_\_ with me to stray. \_\_\_\_\_ Ev - 'ry time I hear your  
 mind, \_\_\_\_\_ I'll not go blind. \_\_\_\_\_ Keep a co - zy cor - ner

voice, \_\_\_\_\_ So soft and low, \_\_\_\_\_ it thrills me so; \_\_\_\_\_  
 dear, \_\_\_\_\_ For lit - tle me, \_\_\_\_\_ yes, lit - tle me.

All I ev - er do is to think of you \_\_\_\_\_ All the whole day long. —  
 I want you to know that I love you so, You're the on - ly one for me. —

**Chorus**

*p-f*  
 Not because your hair is cur - ly, Not because your eyes are  
*p-f*

blue, — I want you to know, my lit - tle dear-ie, You're the

sweetest lit - tle chum I ev - er knew. — There's something in your style and

man-ner That seems to tell me, tell me true. — That the rea-son why I

love you, cause it's you, just you! — you! —