

POPULAR EDITION

SHE'S ALWAYS SINGING THE BLUES

THOSE BLUEY BLUES



Successfully Introduced

By

AL BERNARD

(THE BOY FROM DIXIE)

**ON AMERICA'S
LEADING PHONOGRAPHS**



LYRICS BY

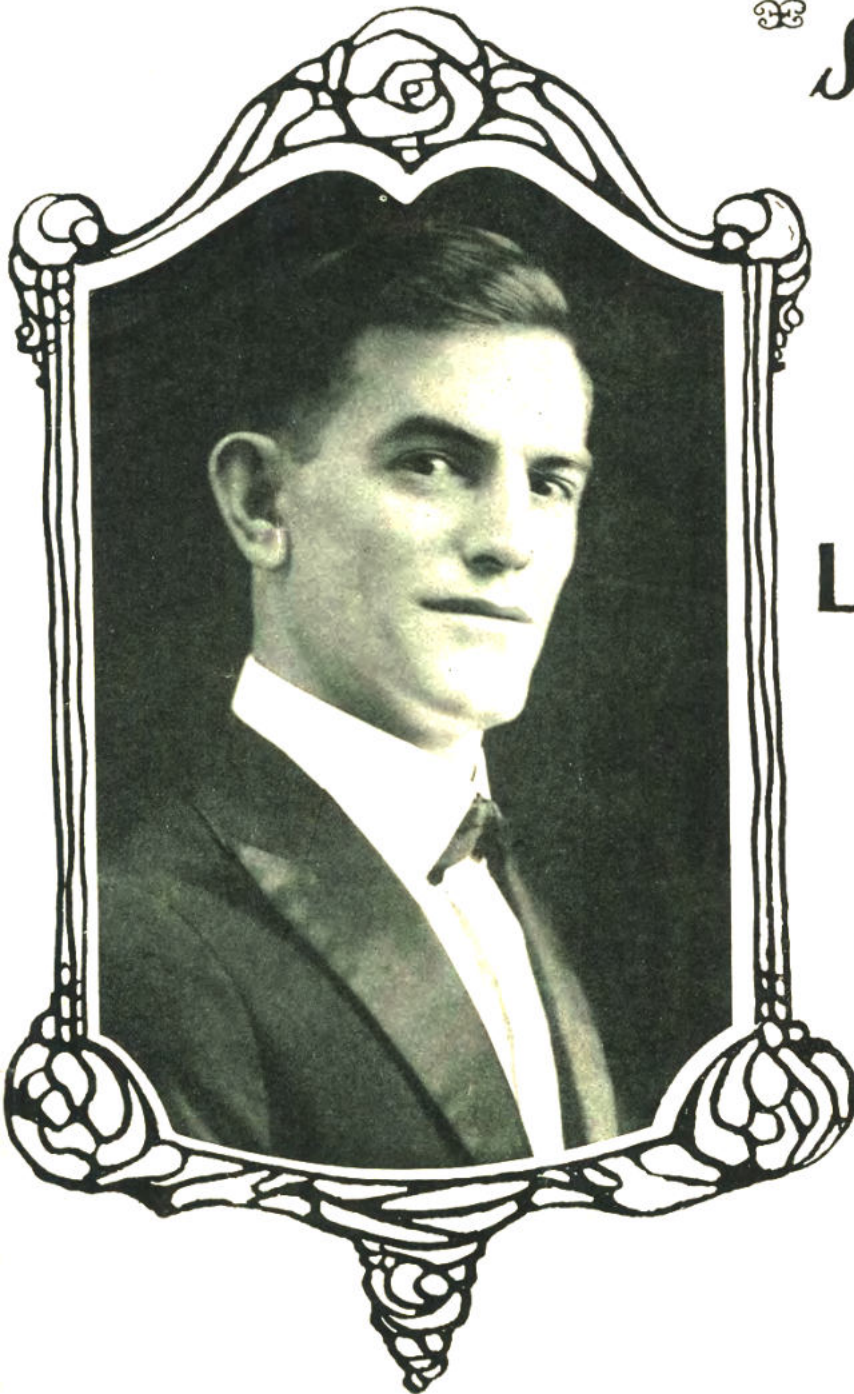
AL BERNARD

MUSIC BY

GEORGE FAIRMAN



REG. U. S. PAT. OFF.



She's Always Singin' The Blues

(Those Blue-y Blues)

Words by
AL. BERNARD

Writer of "Head 'Em And Weep"

Moderato

Song

Music by

GEORGE FAIRMAN

Writer of "Bo-La-Bo"

Piano

f

Till Ready

sfz *mf* *sfz*

There lives next door to me,
Those blues have sure got me,

A girl they call Mar - ie;
And I will tell to thee;

p

She's so lone - some,
She's won my heart,

Yes just as lone - some as she can be;
She'll soon be hap - py you wait and see;

She al - ways stays at home
And when I make her mine

She loves to be a - lone;
She nev - er more will pine;

I will ad-mit that she's a won-der-ful child, - Still she al-most drives me wild:
I will ad-mit that she's had sweet-ies be-fore, - Still with me she'll try once more:

Refrain

For she's al-ways sing - in' the blues, Some-times she sighs, and then she cries;

And when the tears come streaming down her cheeks, Re-minds me of a wa-ter pipe that leaks; This

world to her - is no joke, For her the sun don't shine; - She must of had a lot of trou-ble

right from the start, - It seems to me that some-one must of bro-ken her heart; - For she's

al-ways sing - in' the blues, Those blue-y blues. For she's blues. —