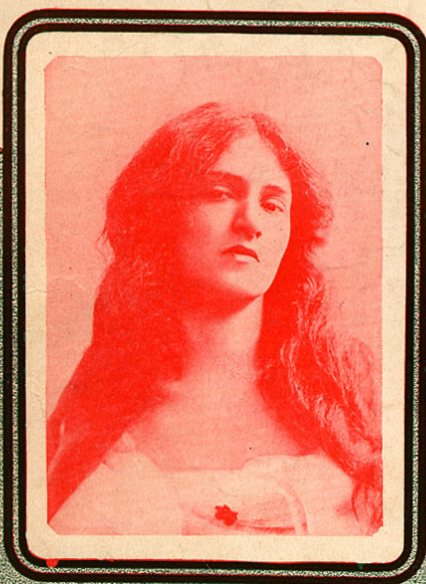


Sung with Great Success by
DOROTHY GOLDEN

**YOU'RE THE FLOWER OF MY HEART,
SWEET ADELINE**



Ballad & Refrain.

WORDS BY
**RICHARD H.
GERARD.**

MUSIC BY
**HENRY W.
ARMSTRONG.**

M. WITMARK & SONS
NEW YORK CHICAGO LONDON SAN FRANCISCO
JOSEF WEINBERGER, LEIPZIG AND VIENNA
ALLAN E. CO. MELBOURNE, AUSTRALIA
CANADIAN AMERICAN MUSIC CO. LTD., TORONTO

50¢
2/- NET.

You're the Flower of My Heart, Sweet Adeline.

Words by RICHARD H. GERARD.

Music by HARRY ARMSTRONG.

Andante.

Introduction for piano, marked *f* (forte). The music is in a 2/4 time signature with a key signature of one flat (B-flat major or D minor). It features a melody in the right hand and a supporting bass line in the left hand.

1. In the eve-ning when I sit a-lone a-dream-ing — Of days gone
 2. I can see your smil-ing face as when we wand-ered — Down by the

Musical notation for the first two lines of the song, marked *p* (piano). The melody continues from the introduction, with lyrics written below the staff.

by love — to me so dear, There's a
 brook - side — just you and I, And it

Musical notation for the third line of the song, continuing the melody and accompaniment.

pic-ture that in fan-cy 'oft ap-pear-ing, — Brings back the
 seems so real at times 'till I a-wak-en, — To find all

Musical notation for the fourth line of the song, concluding the piece.

time love when you were near;
van - ished a dream gone by;

It is then I won - der where you are my
If we meet sometime in af - ter years my

dar - ling,
dar - ling,

And if your heart to me is still the
I trust that I will find your love still

same,
mine,

For the sigh - ing wind and night - in - gale a -
Tho' my heart is sad and clouds a - bove are

sing - ing — Are breath - ing on - ly — your own sweet name. —
hov' - ring — The sun a - gain love — for me would shine. —

CHORUS.

Sweet A - del - ine, My A - del - ine At night, Dear-

mf *espressivo.*

heart For you I pine, In all my

dreams, Your fair face beams, You're the

flow - er of my heart, Sweet A - del - ine.

D.C.