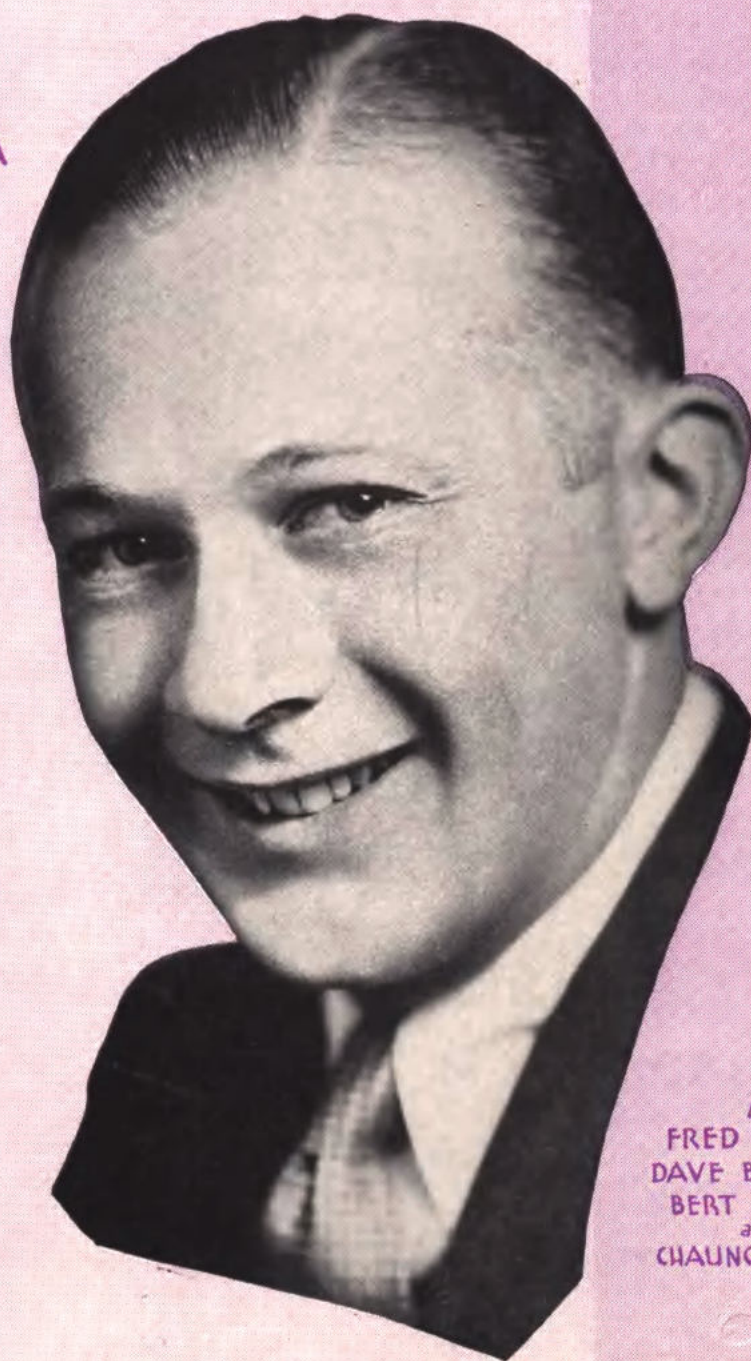


BYE BYE BLUES

signature song of
BERT LOWN
and his
HOTEL BILTMORE ORCHESTRA



by
FRED HAMM
DAVE BENNETT
BERT LOWN
and
CHAUNCEY GRAY



Irving Berlin, Inc.
MUSIC PUBLISHERS
1607 Broadway New York

Bye Bye Blues

Tune Ukulele
or Banjulele Banjo

G C E A

By FRED HAMM
DAVE BENNETT
BERT LOWN &
CHAUNCEY GRAY

Moderato

Piano

The piano introduction consists of two staves. The right hand plays chords in a G major key, while the left hand plays a rhythmic bass line. The tempo is marked 'Moderato' and the dynamics are 'Piano' with a forte 'f' marking.

The second system of piano accompaniment continues the piece with similar chordal and rhythmic patterns. It includes various chord voicings and a steady bass line.

Voice

I got a

VAMP

p

p

The third system features the vocal line starting with the lyrics 'I got a'. Below it, the piano accompaniment includes a section labeled 'VAMP' with a piano 'p' dynamic. The music is in a 4/4 time signature.

big sur-prise, when I saw you smile — I nev - er

The fourth system continues the vocal line with the lyrics 'big sur-prise, when I saw you smile — I nev - er'. The piano accompaniment provides harmonic support with chords and a bass line.

Ukulele Arr.by
MAY SINGHI BREEN

Copyright 1930 by IRVING BERLIN Inc., 1607 Broadway, N. Y. C.

dreamed that it could be

But now I re - al - ize since I saw you smile, —

There's on - ly hap - pi - ness for me. So

CHORUS

BYE BYE BLUES

p-f

BYE BYE

BLUES Bells ring,

birds sing Sun is shin - ing

No more pin - ing Just we

two Smil - ing

This system contains the first four measures of the piece. The vocal line features a long note for 'two' followed by 'Smil - ing'. The piano accompaniment consists of a treble and bass clef with chords and a rhythmic bass line.

thru Don't sigh,

This system contains measures 5-8. The vocal line continues with 'thru Don't sigh,'. The piano accompaniment continues with similar harmonic and rhythmic patterns.

Don't cry, BYE BYE

This system contains measures 9-12. The vocal line concludes with 'Don't cry, BYE BYE'. The piano accompaniment provides harmonic support for the final vocal phrases.

1 2
BLUES. BLUES.

This system contains measures 13-16. It features a double bar line and two first endings labeled '1' and '2'. The vocal line has 'BLUES.' in both sections. The piano accompaniment includes a trill in the final measure.