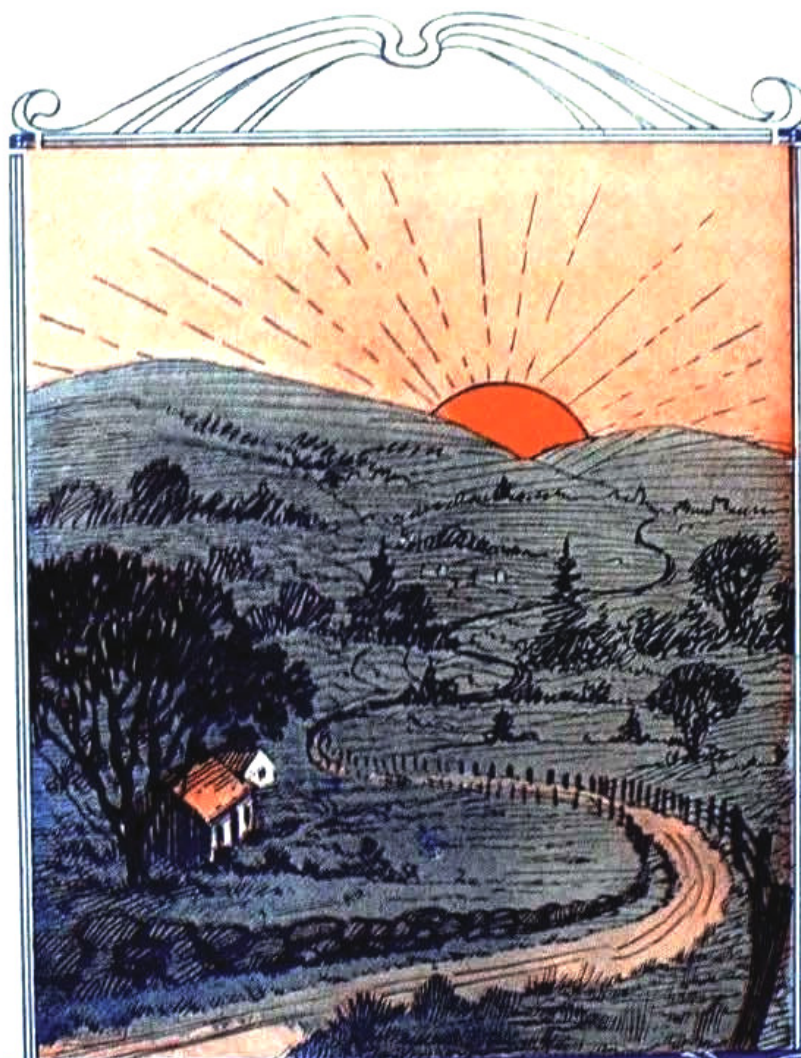


SUNDOWN BLUES

By **W. C. HANDY**

WRITER OF

Memphis Blues, St. Louis Blues,
Aunt Hagar's Children's Blues, etc.



Recorded on Okeh Record No. 4886
By Handy's Orchestra

Published by
W. C. HANDY
1545 BROADWAY, NEW YORK CITY

Sundown Blues

(Hurry Sundown and Let To-Morrow Come)

By W. C. Handy

Moderato

Piano introduction in B-flat major, 4/4 time, marked *Moderato*. The piece begins with a treble clef staff containing a single eighth note G4, followed by a series of eighth and sixteenth notes in the right hand and a bass line in the left hand.

Voice tenderly

Vocal line and piano accompaniment for the first verse. The piano part is marked *Vamp* and *p*. The vocal line is marked *Voice tenderly*.

My two - tim - ing pa - pa
I've got mines of troub - le

Vocal line and piano accompaniment for the second verse. The piano part continues with a vamp accompaniment.

is ag - gra - va - ting me _____ He's run - ning wild but
car - loads of mis - er - y _____ I'd give it all to

Vocal line and piano accompaniment for the third verse. The piano part continues with a vamp accompaniment.

I just can't let him be _____ To - mor - row I'll be
find out who it can be _____ That steals my sun - shine

— a rac - ing with the ris - ing sun Hur - ry sun - down
— and leaves me on - ly blue - y gloom Hur - ry sun - down

and let to - mor - row come.
and let to - mor - row come.

Blues

For I'm goin' to New-port I said to New-port I mean to New-port
For she knows some-thing I said some-thing I mean some-thing

Naw! naw! naw! I'm goin' to New - port I mean New-port Ark - an - saw!
Naw! naw! naw! Why she's a read - er and I need her Law! Law! Law!

I'm go - in' there to see Aunt Car' - line
She reads your for - tune and her cards don't

1 Dye. _____ 2 lie. _____ I've put some

Chorus
Ash - es in my sweet pa - pa's bed So that he can't slip

out Hoo - doo in his bread

Goo-pher dust all_ a - bout I'll fix him! Con - ju -

- ra - tion_ is in his socks and_

shoes To - mor - row he will have those mean Sun - down

Blues. I put some Blues.