

# EV'RY LITTLE BIT HELPS

WORDS BY

**GEORGE WHITING**

MUSIC BY

**FRED FISCHER**

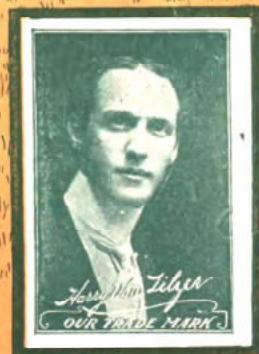


*Harry Puck*

*The Pucks*



*Eva Puck*



*Harry Von Tilzer*  
OUR TRADE MARK

**HARRY VON TILZER**  
MUSIC PUBLISHING CO.  
37 W 26<sup>th</sup> ST NEW YORK, CHICAGO, FRISCO, LONDON.



# Ev'ry Little Bit Helps.

Words by  
GEORGE WHITING.

Music by  
FRED. FISCHER.

Moderato.

mf

f

The piano introduction consists of two staves. The right hand plays a series of chords and eighth notes, while the left hand plays a steady bass line. The tempo is marked 'Moderato' and the dynamics range from mezzo-forte (mf) to forte (f).

till ready.

1. A dus - ky coon, — who  
2. Said she "I've heard — your

p

The first system of the vocal melody is shown above the piano accompaniment. The piano part continues with a steady bass line. Dynamics include piano (p).

came to spoon, his la - dy love — from morn till noon. It  
tales of woe, I think it time — for you to go, — Just

The second system of the vocal melody continues the story. The piano accompaniment provides harmonic support. Dynamics include piano (p).

seemed some-how — they nev - er could a - gree; No  
put that lov - in' gag up on — the shelf; Then

The final system of the vocal melody concludes the piece. The piano accompaniment ends with a final chord. Dynamics include piano (p).

mat - ter what he tried to do, — She'd say I've had e -  
 he re - plied, what shall I do, — So I can make, a

nough of you, — Don't try to hand that lov - ey talk to  
 hit with you, — You know I love you on - ly for your -

me. He said "Hon' don't be  
 self. But as she said "good

cross, I'll let you be the boss."  
 bye," once more she heard him cry.

## CHORUS.

Give me just one lov - ing smiie, Ev<sup>2</sup>-ry lit-tle bit helps,\_\_\_\_\_

*p-f*

Let me hold your hand a while, Ev<sup>2</sup>-ry lit - tle bit helps,\_\_\_\_\_

Now and then a gen - tle squeeze, So my ach-ing heart won't freeze,

Love me just a tin - y bit please, Ev<sup>2</sup>-ry lit-tle bit helps. helps.

1 2