

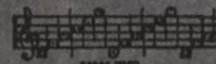
EVANGELINE

AS SUNG BY
DOLORES DEL RIO
IN
EDWIN CAREWE'S
UNITED ARTISTS PRODUCTION
"EVANGELINE"

MUSIC BY
AL JOLSON
WORDS BY
BILLY ROSE

Irving Berlin, Inc.
MUSIC PUBLISHERS
1607 Broadway New York

ORDER CODE
"EVANGELINE"



MADE IN
U.S.A.

EVANGELINE

Tune Ukulele
or Bânjulele Banjo

G C E A

Words by
BILLY ROSE

Music by
AL JOLSON

Moderato

First system of piano introduction. Treble clef, 3/4 time signature. Bass clef. Dynamics: *f*. The music consists of a series of chords and moving lines in both hands.

Second system of piano introduction. Treble clef, 3/4 time signature. Bass clef. Dynamics: *p*. Includes a section labeled "Vamp" with a repeat sign. The music features a mix of chords and melodic fragments.

VOICE

Vocal line and piano accompaniment. Treble clef, 3/4 time signature. Bass clef. Dynamics: *p*. The vocal line includes two systems of lyrics. The piano accompaniment provides harmonic support with chords and moving lines.

As long as wat - er flows I'll love you _____
As long as there's a moon, I'll love you _____

Ukulele Arr. by MAY SINGHI BREEN

Copyright 1929 by IRVING BERLIN, Inc. 1607 B'way, N. Y.

International Copyright Secured

Made in U. S. A.

All Rights Reserved

As long as there are skies of
 As long as there are stars that

blue As long as there's a
 shine As long as or - i -

rose a sum - mer breeze that blows so
 - oles pour out their lit - tle souls so

long I'll keep on lov - ing you, sweet - heart.
 long you'll own this heart of mine, sweet - heart.

CHORUS

Love me for ev - er E - van - gel - ine nev - er

p-f

part from this heart of mine _____ Hold me for -

ev - er E - van - gel - ine Your ca - ress is a

bless - ing di - vine _____ You turn the night in -

-to a night of splen-dor ————— I yearn for lips that

burn in sweet sur - ren - der so ten - der nev - er to

sev - er E - van - gel - ine for you're part of this

heart of mine. ————— mine. —————