

1902 B62 400

# DING-A-LING, DING

OR  
MA BABY DON'T TREAT ME RIGHT!

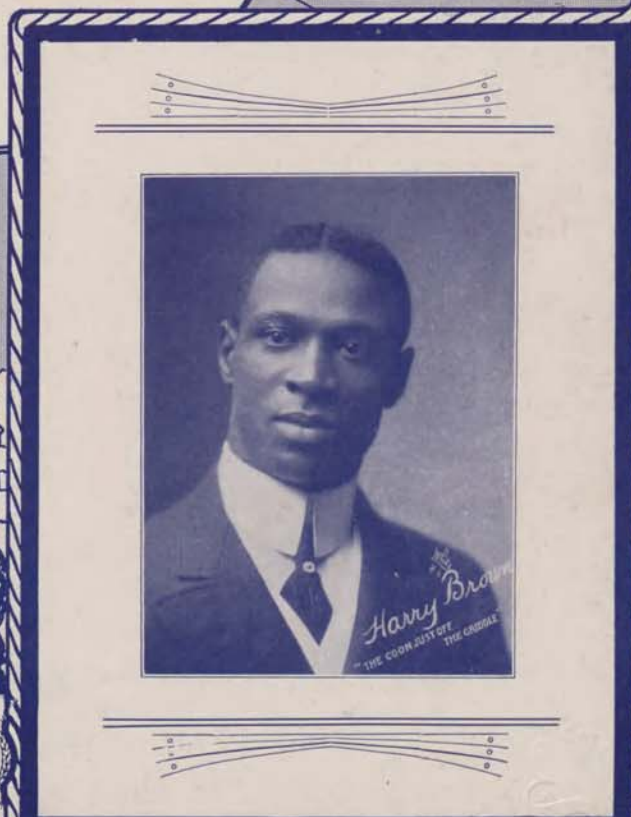
WORDS & MUSIC BY

SHEPARD N.  
EDMONDS

SUCCESSFULLY FEATURED

BY

HARRY BROWN



Published by JOS. W. STERN & CO. 34 Last 21<sup>st</sup> St. N. Y. N. Y. CHICAGO AND LONDON

# Ding-a-ling, Ding,

3

OR

Ma Baby Don't Treat Me Right. Words & Music by  
SHEPARD N. EDMONDS.

Moderato.

The piano introduction is in 2/4 time, marked 'Moderato'. It begins with a treble clef and a key signature of one flat (B-flat). The music starts with a forte (f) dynamic and features a rhythmic pattern of eighth and sixteenth notes in the right hand, with a bass line of quarter notes in the left hand. The piece concludes with a fortissimo (ff) dynamic.

The piano accompaniment for the first vocal line is in 2/4 time. It begins with a treble clef and a key signature of one flat. The music is marked with a piano (p) dynamic. The right hand features a melodic line with eighth and sixteenth notes, while the left hand provides a bass line of quarter notes. The piece concludes with a repeat sign.

some dese mor-nin's when der bells am ton - in', Ding - a - ling,  
feeds dis coon-a - on der best of eat - in', Ding - a - ling,

The piano accompaniment for the second vocal line is in 2/4 time. It begins with a treble clef and a key signature of one flat. The music is marked with a piano (p) dynamic. The right hand features a melodic line with eighth and sixteenth notes, while the left hand provides a bass line of quarter notes. The piece concludes with a repeat sign.

Ding, I'se a gwine to drape a cer - tain coon in mourn-in',  
Ding; But he's al - ways hang-in' round de bar rooms treat - in',

The piano accompaniment for the third vocal line is in 2/4 time. It begins with a treble clef and a key signature of one flat. The music is marked with a piano (p) dynamic. The right hand features a melodic line with eighth and sixteenth notes, while the left hand provides a bass line of quarter notes. The piece concludes with a repeat sign.

Copyright, MCMII by Jos. W. Stern & Co.

Copyright and performing rights secured for Great Britain and all British Colonies and Possessions.  
Reproduction of this Music on Mechanical Instruments strictly prohibited. All rights reserved.

Ding - a - ling, Ding; He calls der yal - ler gals a  
Ding - a - ling, Ding; Now when he calls a me a

"Babe" and "Hon - ey," Ding - a - ling, Ding, Den he  
"Babe" and "Hon - ey," Ding - a - ling, Ding, Den I

comes to me - a for his spen-din' mon - ey, Ding - a - ling, Ding.  
knows for sure he's gwine to ax for mon - ey, Ding - a - ling, Ding.

*CHORUS.*  
*pp*

'Cause ma Ba - by a don't treat a me right,

*mf*

Ah loves - a - dat sha - - dy \_\_\_\_\_ both day and night;



And when dem bells toll \_\_\_\_\_ a - you'll hear - a - me



sing, \_\_\_\_\_ "Well - a - good - bye Ba - - by \_\_\_\_\_ Ling, Ding - a - ling,



Ding?" \_\_\_\_\_ 'Cause ma Ding?" \_\_\_\_\_

