

# HONEY CHILE

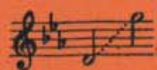
LULLABY

For Voice and Piano

By

LILY STRICKLAND

High Voice



Medium Voice



Low Voice



Price, 50 cents. net

G. SCHIRMER, Inc.  
*New York*

25627



# Honey Chile

Lily Strickland

Moderato

Voice

1. Lawd bless ma soul! — Is dat ma  
2. Lawd bless ma soul! — Ah sho' is

Piano

*mp* *mf*

lid - dle hon - ey chile? Hon - ey! You sho' is growed to be a  
glad to see ma boy! — Seems lak a lid - dle while a - go, Ah

great big pret - ty man! 'Mem - ber how Ah use - ter take you  
called you mam - my's joy! Mam - my's get - tin' might - y ole an'

*dolce*

Copyright, 1922, by G. Schirmer, Inc.  
Printed in the U. S. A.

on ma knee, An' sing so sof' an' low; You wan' to heah yo'  
fee-ble now, An' ain' got long to stay, But heah or dah ef

mam-my sing a - gin, An' make lak you's ma ba - by boy once mo! \_\_\_\_\_  
you need mam-my's love, Ah'll sing yo' sleep - y songs to you once mo! \_\_\_\_\_

### Refrain

1-2.0 shet yo' eyes, \_\_\_\_\_ an' go to res, \_\_\_\_\_ ma - hon - ey chile, \_\_\_\_\_



— Come lay yo' haid — on mam-my's bres' — Jus' a lid-dle wile! —

The first system consists of a vocal line and piano accompaniment. The vocal line is on a single staff with lyrics: "Come lay yo' haid — on mam-my's bres' — Jus' a lid-dle wile! —". The piano accompaniment is on two staves (treble and bass clef). The key signature has one sharp (F#), and the time signature is 4/4. The piano part features a rhythmic pattern of eighth and sixteenth notes, with a triplet of eighth notes in the second measure. The vocal line has a melodic line with a triplet of eighth notes in the second measure and a fermata over the final note.

— Yo' bed-der stop dat smil-in' at me, It's time fur you to

The second system continues the musical score. The vocal line has lyrics: "Yo' bed-der stop dat smil-in' at me, It's time fur you to". The piano accompaniment continues with similar rhythmic patterns. A dynamic marking of *mf* (mezzo-forte) is placed above the vocal line in the second measure. The piano part has a *p* (piano) marking in the first measure of the second system.

res. De moon am shin-in' an' de Sar'-man's come, So go to

The third system concludes the musical score. The vocal line has lyrics: "res. De moon am shin-in' an' de Sar'-man's come, So go to". The piano accompaniment continues with similar rhythmic patterns. A dynamic marking of *mf* is placed above the piano part in the second measure. The piano part has a *p* marking in the first measure of the third system.

to Coda ⊕ 1 *pp*

sleep, — ma lid-dle ba-by bunch o' hon-ey chile! — O shet yo'

2

chile! —

Coda ⊕

chile! —

Coda

*l.h.*