

To Miss Mary E Myers

MISSISSIPPI

POLKA

Composed for the

PIANO

BY

MRS. V. G. COWDIN.

25¢ net

BOSTON Published by OLIVER DITSON 115 Washington St

2 E BRUL
Phila 9

10 A TRUNK
Chicago

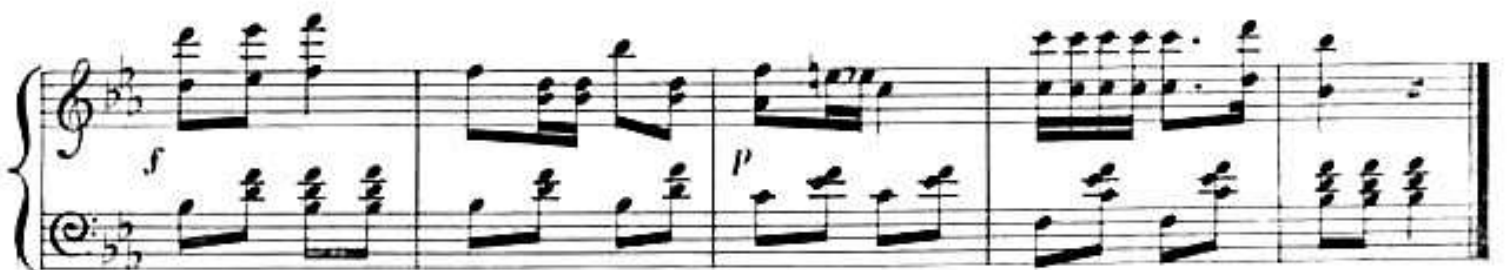
H D BEWITT
N Orleans

S T GORDON
N York

C C CLAPP & C^o
Boston

Entered according to act of Congress in 1855 by V. G. Cowdin in the District Office of the District Court of Mass.

MISSISSIPPI POLKA.



First system of a piano score in 3/4 time, featuring a treble and bass clef. The music consists of chords and melodic lines in both hands. Dynamic markings include *f* and *p*.

Second system of a piano score in 3/4 time. It includes a repeat sign in the middle. Dynamic markings include *f* and *p*.

Third system of a piano score in 3/4 time. Dynamic markings include *f* and *p*.

Fourth system of a piano score in 3/4 time, featuring a key signature change to two flats. Dynamic markings include *pp* and *p*.

Fifth system of a piano score in 3/4 time, concluding with a double bar line. Dynamic markings include *pp* and *f*.

First system of a piano score. The right hand features a melodic line with eighth-note patterns and slurs. The left hand provides a steady accompaniment with chords and eighth notes. Dynamics include *pp* and *p*.

Second system of the piano score. It continues the melodic and accompanimental lines. A double bar line is present in the middle of the system. Dynamics include *pp* and *p*.

Third system of the piano score. The right hand continues with eighth-note patterns. Dynamics include *f* and *p*.

Fourth system of the piano score. The right hand features a triplet of eighth notes. Dynamics include *f* and *p*.

Fifth system of the piano score. The right hand begins with the instruction *8va* above the staff. It includes a triplet of eighth notes. Dynamics include *f* and *p*. The system concludes with a double bar line.