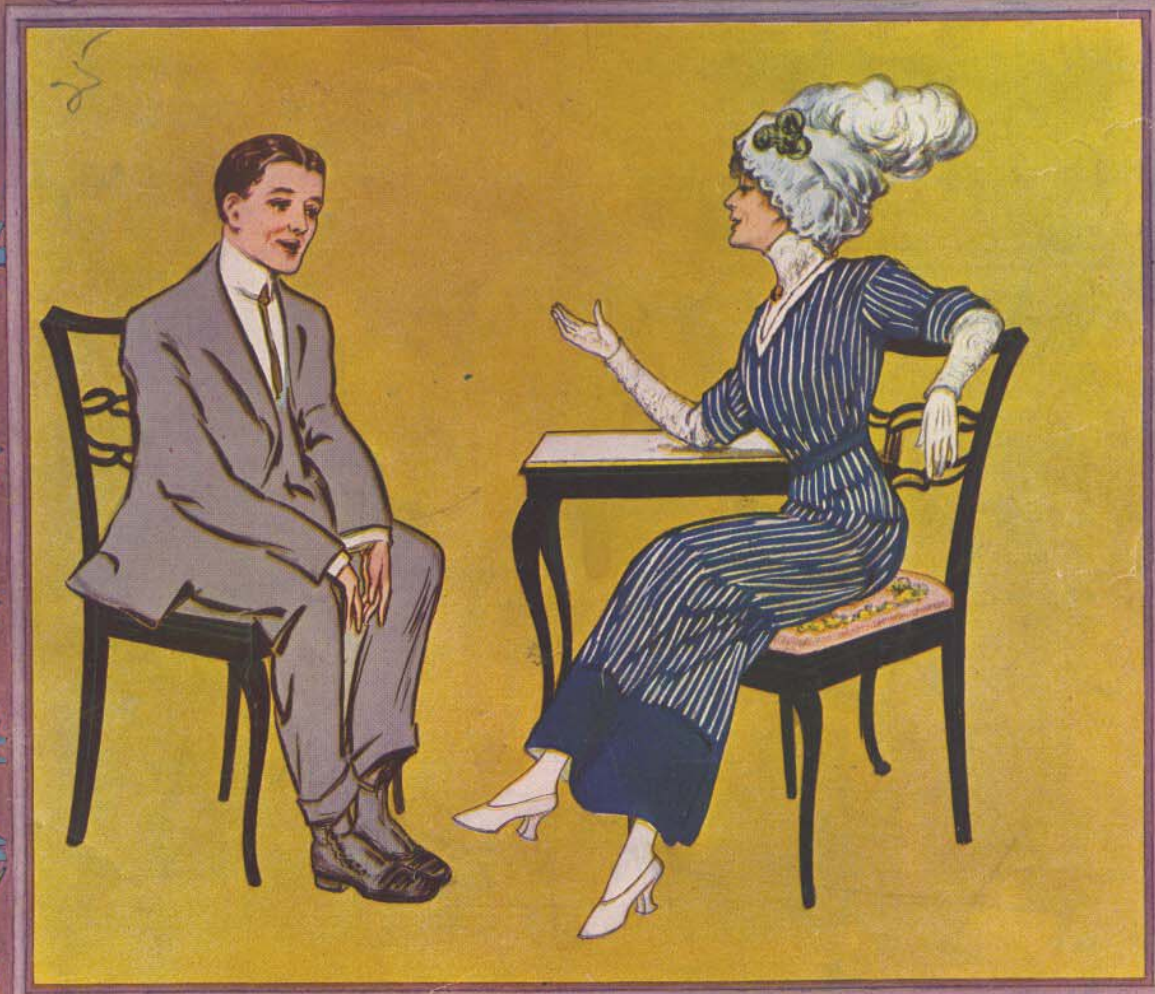


POPULAR EDITION

DO IT NOW

SONG



by WILLIAMS and VAN ALSTYNE



5

JEROME H. REMICK & CO.

NEW YORK · DETROIT

STARNER

Performing rights reserved

DO IT NOW

Words by
HARRY WILLIAMS

Music by
EGBERT VAN ALSTYNE

Moderato

Piano *f*

The piano introduction consists of two staves. The right hand starts with a treble clef, a key signature of three flats (B-flat, E-flat, A-flat), and a common time signature. It begins with a series of eighth notes: G4, A4, B-flat4, C5, B-flat4, A4, G4. This is followed by a series of chords: G4-B-flat4, A4-C5, B-flat4-A4, G4-F4, E4-D4, C4-B3, B3-A2, G2-F2. The left hand starts with a bass clef and a common time signature, playing a series of chords: G2-B2, A2-G2, F2-E2, E2-D2, C2-B1, B1-A1, G1-F1, F1-E1, D1-C1, C1-B0, B0-A0, G0-F0.

Vamp (till ready)

mf *p*

To the sea, sweet Ma-rie went a
Mis-ter Wise rubbed his eyes, then he

The first line of lyrics is set to music. The vocal line starts with a treble clef and a key signature of three flats. The melody begins with a quarter rest, followed by a quarter note G4, an eighth note A4, a quarter note B-flat4, an eighth note C5, a quarter note B-flat4, an eighth note A4, and a quarter note G4. The piano accompaniment starts with a treble clef and a key signature of three flats, playing a series of chords: G4-B-flat4, A4-C5, B-flat4-A4, G4-F4, E4-D4, C4-B3, B3-A2, G2-F2. The left hand starts with a bass clef and a key signature of three flats, playing a series of chords: G2-B2, A2-G2, F2-E2, E2-D2, C2-B1, B1-A1, G1-F1, F1-E1, D1-C1, C1-B0, B0-A0, G0-F0.

fish - ing mer - ri - ly, In a sweet Pa - ri - sian gown one day, And she
looked up in sur - prise, And he said, "my dear - ie, you're in wrong, I sus -

The second line of lyrics is set to music. The vocal line starts with a treble clef and a key signature of three flats. The melody begins with a quarter note G4, an eighth note A4, a quarter note B-flat4, an eighth note C5, a quarter note B-flat4, an eighth note A4, and a quarter note G4. The piano accompaniment starts with a treble clef and a key signature of three flats, playing a series of chords: G4-B-flat4, A4-C5, B-flat4-A4, G4-F4, E4-D4, C4-B3, B3-A2, G2-F2. The left hand starts with a bass clef and a key signature of three flats, playing a series of chords: G2-B2, A2-G2, F2-E2, E2-D2, C2-B1, B1-A1, G1-F1, F1-E1, D1-C1, C1-B0, B0-A0, G0-F0.

took for a hook, in her lit - tle pock - et book, All the
pect you're on deck for the boy that writes the check, But I

The third line of lyrics is set to music. The vocal line starts with a treble clef and a key signature of three flats. The melody begins with a quarter note G4, an eighth note A4, a quarter note B-flat4, an eighth note C5, a quarter note B-flat4, an eighth note A4, and a quarter note G4. The piano accompaniment starts with a treble clef and a key signature of three flats, playing a series of chords: G4-B-flat4, A4-C5, B-flat4-A4, G4-F4, E4-D4, C4-B3, B3-A2, G2-F2. The left hand starts with a bass clef and a key signature of three flats, playing a series of chords: G2-B2, A2-G2, F2-E2, E2-D2, C2-B1, B1-A1, G1-F1, F1-E1, D1-C1, C1-B0, B0-A0, G0-F0.

Copyright MCMXI by JEROME H. REMICK & Co., New York & Detroit

Copyright, Canada, MCMXI by Jerome H. Remick & Co.

Propiedad para la Republica Mexicana de Jerome H. Remick & Co., New York y Detroit. Depositada conforme a la ley

rouge that she could store a - way. In des - pair she would stare till she
could - n't ev - en write a song. On the wee sal - ar - y they are

met a mil - lion - aire, Whose dad - dy left a large es - tate; He was
hand - ing out to me, We two would have to live as one, But if

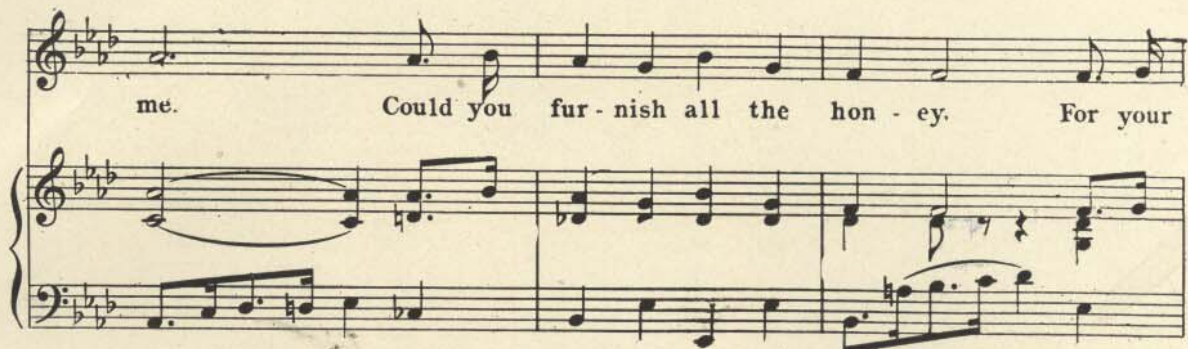
fine, just de - vine, So she threw him out a line, And this is what she used for bait.
you think I'll do With my dol - lar eighty two, We'll fin - ish what we've just be - gun?

CHORUS.

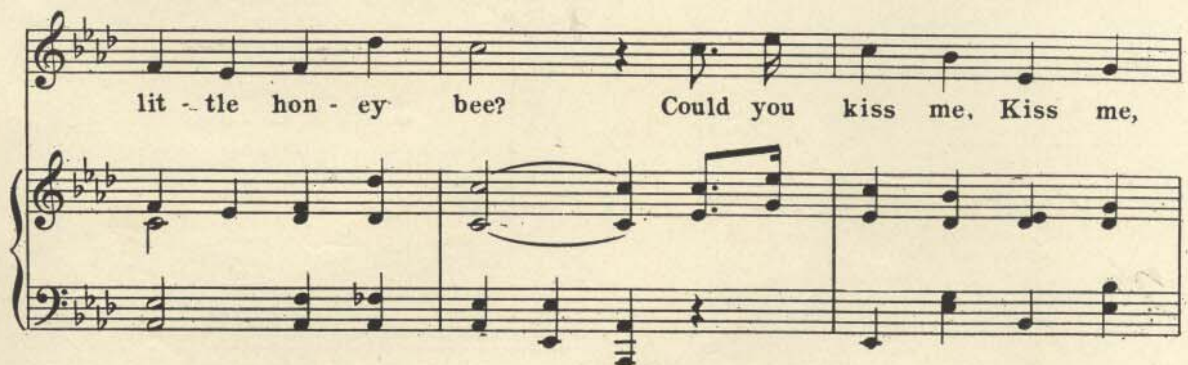
I be - lieve that I could like you If I knew that you liked

p-f

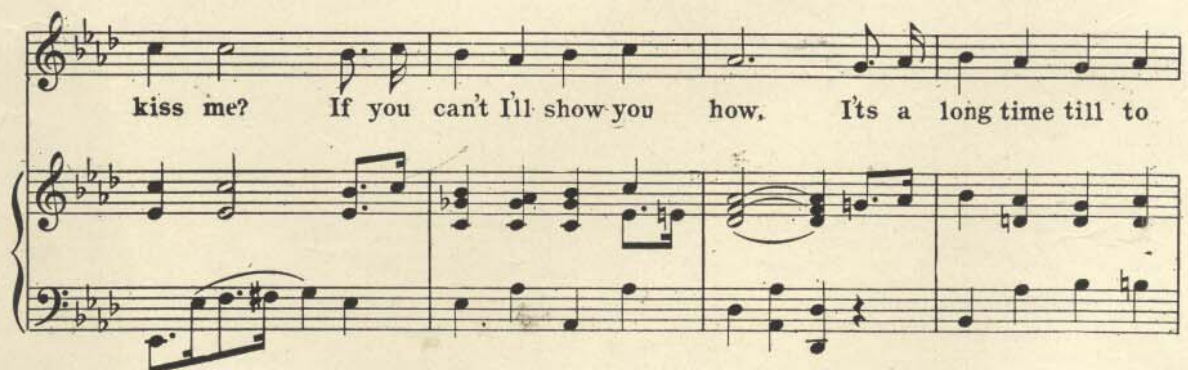
me. Could you fur-nish all the hon-ey. For your



lit-tle hon-ey bee? Could you kiss me, Kiss me,



kiss me? If you can't I'll show you how, It's a long time till to



mor-row, Do it now, Do it now. I be now. —

