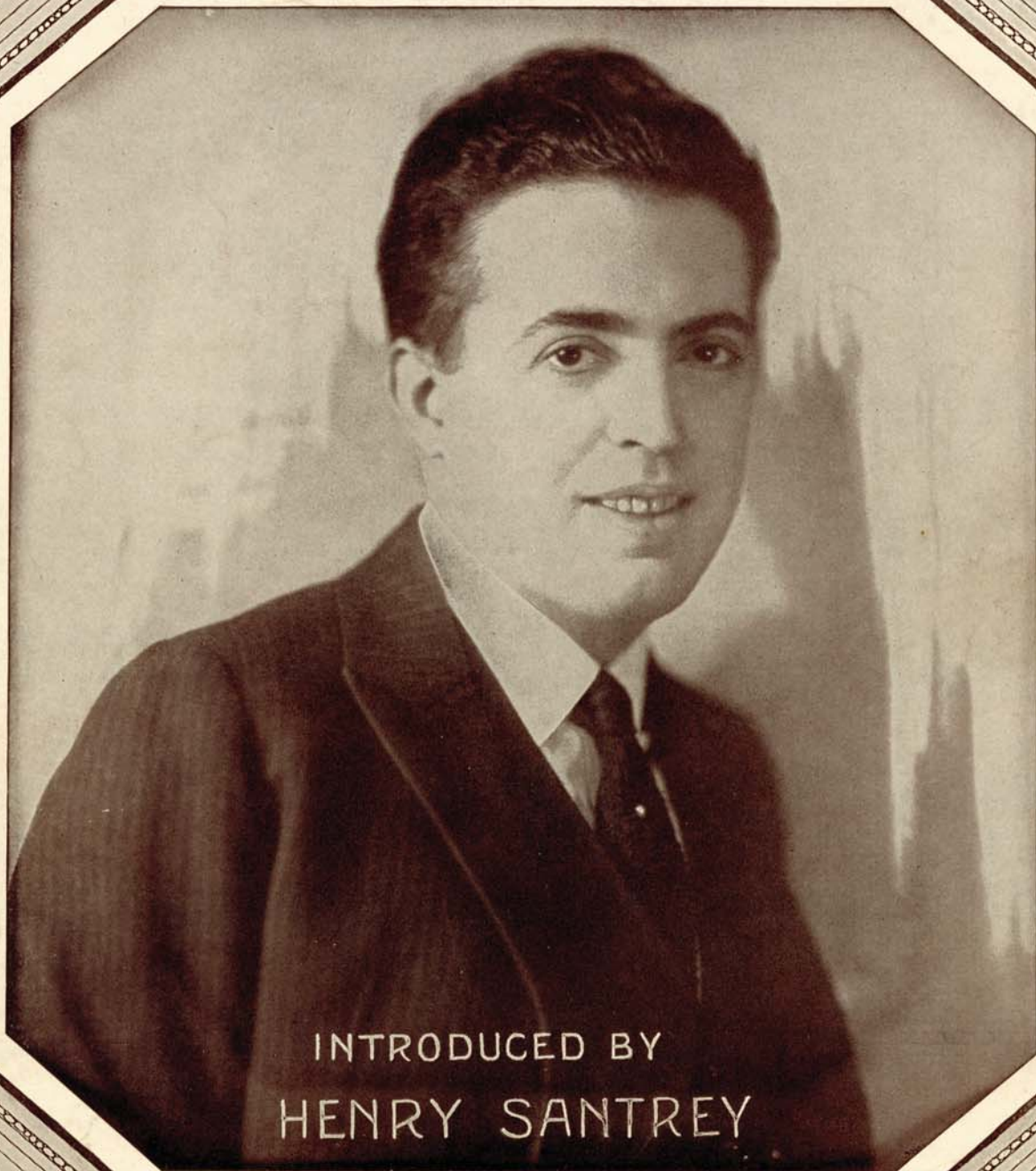


A Smile Will Go A Long Long Way

A. G. Hummel



INTRODUCED BY
HENRY SANTREY

By **BENNY DAVIS**
and **HARRY AKST**

Waterson  Snyder Co.
STRAND THEATRE BUILDING NEW YORK

Trade Mark Registered

G. FRED. KRANZ MUSIC Co.
302 N. CHARLES STREET
BALTIMORE, MD.

MADE
IN
U.S.A.

A Smile Will Go A Long Long Way

3

By BENNY DAVIS
and HARRY AKST

Moderato

Piano

The piano introduction consists of two staves. The right hand starts with a series of chords and eighth notes, marked with a forte 'f' dynamic. The left hand provides a steady bass line with quarter notes. The tempo is marked 'Moderato'.

The piano accompaniment for the first vocal line features a rhythmic pattern of eighth notes in the right hand and quarter notes in the left hand. A section marked with a repeat sign and 'Till ready' is indicated.

Voice

Smil - ing fac - es al - ways find a wel - come, —
Once I used to think my case was hope - less, —

The piano accompaniment continues with a similar rhythmic pattern, marked with a piano 'p' dynamic.

That's why ev - 'ry - one should learn to smile. — Re -
Nev - er wore a smile the live-long day. — But

The piano accompaniment concludes with a final cadence, marked with a piano 'p' dynamic.

-mem-ber aft - er all, Your troub-les may be small;
since I learned to smile, My life has been worth while;

Here's a lit - tle thought that's worth your while: _____
That is just the rea - son why I say: _____

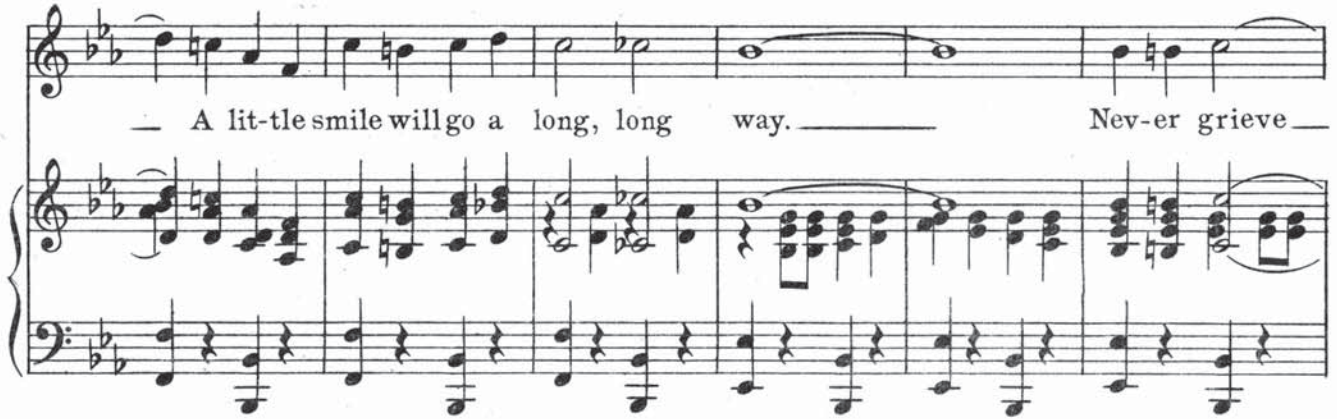
Chorus

When you're blue, _____ and kind-a lone-ly, too, _____ You'll find a smile will go a

p-f

long, long way. _____ Though you're down, _____ don't sit a-round and frown _____

A lit-tle smile will go a long, long way. Nev-er grieve



— just try and make be-lieve, — The sky is blue al-tho' you know it's



grey. — Don't you pine, — it's just a waste of time — You'll find a



smile will go a long, long way." way."



D.S.