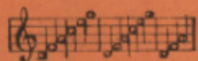


IRVING BERLIN'S

B5151  
446

# ALWAYS

MADE IN  
U.S.A.



Irving Berlin, Inc.  
MUSIC PUBLISHERS  
1607 Broadway New York

# ALWAYS

Tune Ukulele

G C E A

By IRVING BERLIN

Valse Moderato

Piano introduction in 3/4 time, starting with a forte (*f*) dynamic. The music features a melodic line in the right hand and a bass line in the left hand, with various chords and ornaments.

Piano accompaniment for the first vocal line. It includes a *Vamp* section marked *p* (piano) with a repeat sign. The music is in 3/4 time and features a mix of chords and melodic fragments.

Voice

Ev - 'ry - thing went wrong, and the whole day long — I'd

Piano accompaniment for the second vocal line. It includes a *marcato* section. The music is in 3/4 time and features a mix of chords and melodic fragments.

feel

so

blue —

Piano accompaniment for the third vocal line. The music is in 3/4 time and features a mix of chords and melodic fragments.

Ukulele Arr. by MAY SINGHI BREEN

Copyright MCMXXV by IRVING BERLIN Inc., 1607 B'way, N.Y.  
 International Copyright Secured MADE IN U. S. A. All Rights Reserved

For the long - est while, I'd for - get to smile — Then

*marcato*

I met you —

*V.*

Now that my blue days have passed, —

*V.*

Now that I've found you at last —

*V.*

## CHORUS

I'll be lov - ing you, al - ways

*p-f*

with a love that's true, al - ways

When the things you've planned, Need a help - ing hand,

I will un - der - stand, al - ways, al - ways.

Days may not be fair, al - ways \_\_\_\_\_

That's when I'll be there, al - ways \_\_\_\_\_

Not for just an hour, Not for just a day,

Not for just a year, But al - ways. — al - ways. —