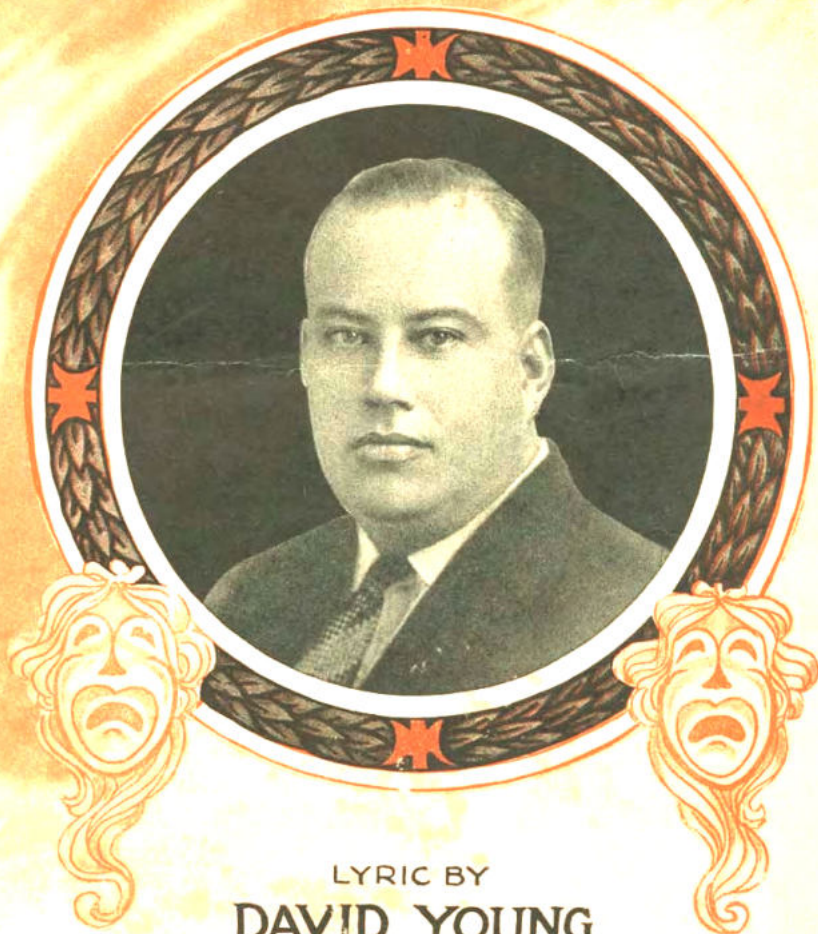


# I AIN'T GOT NOBODY

AND NOBODY CARES FOR ME

FEATURED BY  
*Paul Biese and His Novelty Orchestra*  
AT THE  
NEW BISMARCK GARDEN, CHICAGO.



LYRIC BY  
**DAVID YOUNG**  
MUSIC BY  
**CHAS. WARFIELD**

Frank K. Root & Co.  
CHICAGO - NEW YORK

*Albert & Son, Australasian Agents, Sydney, Australia.*

# I AIN'T GOT NOBODY

3

Words by  
DAVID YOUNG.

(And Nobody Cares for Me)

Music by  
CHAS. WARFIELD.

Moderato.

The piano introduction is in G major and 3/4 time. It begins with a treble clef and a bass clef. The right hand starts with a series of chords and moving lines, while the left hand provides a steady bass line. Dynamics include a forte (f) marking.

VAMP

The piano accompaniment for the first vocal line. It features a treble clef and a bass clef. The right hand has chords and moving lines, while the left hand has a bass line. Dynamics include forte (f) and mezzo-piano (mp). A repeat sign is present, followed by a section marked 'VAMP'.

I  
Say,

had a sweet-heart once I loved, And I was hap-py as could be; But  
did you ev - er feel lone-some, Just as lonesome as could be, A-

The piano accompaniment for the second vocal line. It features a treble clef and a bass clef. The right hand has chords and moving lines, while the left hand has a bass line. Dynamics include piano (p).

now he's gone and left me here For some-one else, you see. Some  
bout some - one that you just knew Had real-ly mis-treat - ed you, And

The piano accompaniment for the third vocal line. It features a treble clef and a bass clef. The right hand has chords and moving lines, while the left hand has a bass line. Dynamics include piano (p).



of these days he'll look for me, And I'll be far a-way, And  
you had that sad feel-ing that Just made you aw-ful blue, And

*rall.*  
no more will I have to pine For the love I thought was mine. 'Cause  
you could not get right some-how? That's the way I'm feel-ing now. 'Cause

*rall.*

CHORUS.  
*a tempo*

I aint got no - bo - - dy, And no - bo - dy

*a tempo*  
*p-f*

cares for me; That's why I'm sad and

lone - - - ly, — Say, won't you just take a chance with me? — 'Cause

I'll sing sweet songs all the time, — If you will be — a

pal of mine, — 'Cause I — ain't got no - bo - - dy, And

no-bo-dy cares for me. — 'Cause me. —