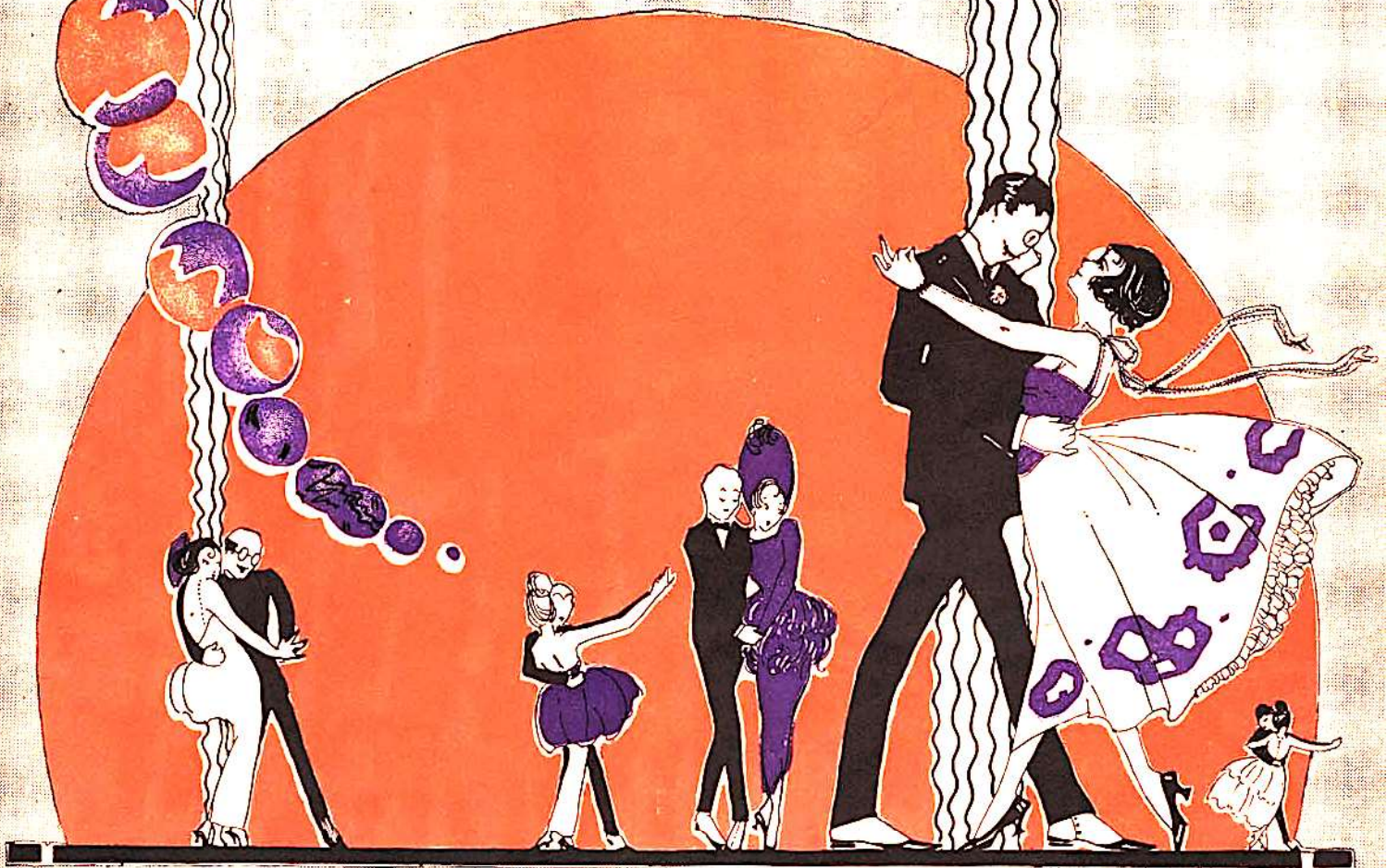


# THAT NAUGHTY WALTZ.

SONG  
LYRIC BY EDWIN STANLEY  
MUSIC BY SOL P LEVY  
60



FORSTER  
MUSIC PUBLISHER INC.  
736 SO. MICHIGAN AVE.  
CHICAGO

ORIGINALLY  
PUBLISHED BY



NEW YORK  
N.Y.



# That Naughty Waltz

Lyric by (Take me in your arms again and waltz, and waltz, and waltz)  
EDWIN STANLEY

Music by  
SOL P. LEVY  
Compos of "Why"

Pedaled and fingered by Frederic Knight Logan

Slowly

mf

a little faster

5 3 1 3 3 1 2 3 5

Red \* Red \* Red \* Red \* Red \* Red

Slow Waltz time

Hold me — tight-ly, —  
To be — ev-er —

gradually slower

p

1 3 5 1 2 3 5

Red \* Red \* Red \* Red \* Red \* Red

swing me — light-ly, — To that — naugh-ty — waltz —  
thus to — geth-er — Is my — fond-est — dream —

2 5 3 2 1 4 1 4 5

1 2 1 3 1

Red \* Red \* Red \* Red \* Red \* Red

So en - tranc-ing; — seems like — danc-ing —  
Skies are — bright-ened, — sor - rows — light-ened —

1 3 5 3 2 1 4 3 1 2 1 2

Red \* Red \* Red \* Red \* Red \* Red

In the moon-light — on a June night; — How it —  
While they're play-ing — and we're sway-ing; — But the —

rit. a tempo

Red 5 Red 5

thrills me! — Ho it — fills me — With its — mel - low —  
glad - ness — turns to — sad - ness — When the — mu - sic —

Red \* Red \* Red \* Red \* Red \* Red \*

charms! — You know — dear - est, — Hea - ven's —  
halts; — So, my — dear - ie, — let's be —

mf

Red \* Red \* Red \* Red \* Red \*

near - est — When I'm — in your — arms.  
chee - ry — While they — play that — waltz.

dim.

Red \* Red \* Red \* Red \* Red \*

REFRAIN

For duet 2<sup>d</sup> Voice sing small notes

Oh play — a - gain — that naugh - ty waltz — And

5 \* 5 \* 5 \* 5 \*

play — it soft — and low; — Oh

5 \* 5 \* 5 \* 5 \* 5 \* 5 \* 5 \*

say — a - gain — "I love — you, dear" — The

5 \* 5 \* 5 \* 5 \*

sweet - est words — I know; — Oh please — re-

5 \* 5 \* 5 \* 5 \* 5 \* 5 \* 5 \*

peat — your prom - ise sweet — That you — will

Handwritten musical notation for the first system. The vocal line is on a single staff with lyrics. The piano accompaniment consists of two staves (treble and bass clef). Fingerings are indicated by numbers 1-5. The piano part includes a rhythmic pattern of eighth notes in the bass clef.

ne'er — be false — And take — me

Handwritten musical notation for the second system. The vocal line continues with lyrics. The piano accompaniment continues with complex chordal textures and fingerings. The bass clef part has a more active line with eighth notes.

in — your arms — a - gain And waltz — and

Handwritten musical notation for the third system. The vocal line continues with lyrics. The piano accompaniment features a waltz-like feel with triplets and specific fingerings. The bass clef part has a steady eighth-note accompaniment.

waltz — and waltz. Oh waltz.

Handwritten musical notation for the fourth system. The vocal line concludes with lyrics. The piano accompaniment includes a repeat sign and a final cadence. Fingerings are clearly marked throughout.