

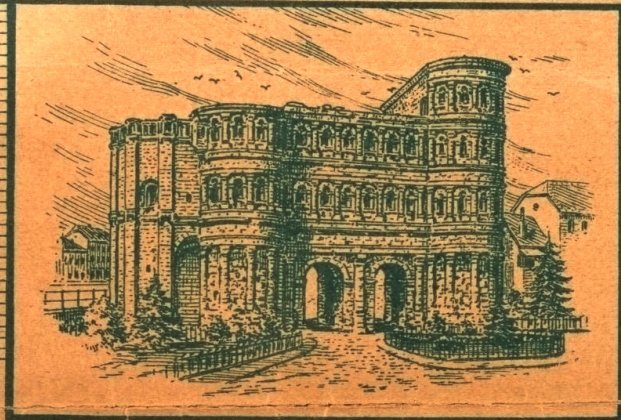
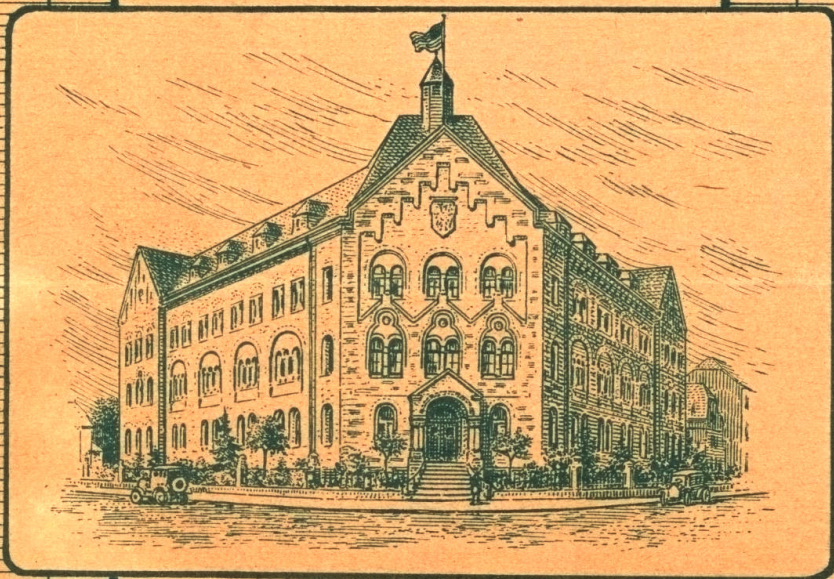
MAR 25 1919

# "THOSE AMERICAN BLUES" ( I'VE GOT E'M )

©CLE44885



Words and Music by Art Hiller.



M1646  
.H

M1646

RD

Published by Art Hiller - Treves Germany.

# "THOSE AMERICAN BLUES"

(I've Got 'Em)

Words and Music by  
ART. HILLER.

The piano introduction consists of two staves. The right hand plays a series of chords and eighth notes, while the left hand provides a steady bass line with chords. The key signature is one sharp (F#) and the time signature is 7/8.

Voice

The voice line is written on a single staff in treble clef. It begins with a melodic phrase that corresponds to the lyrics below.

1. - I've been in Eu-rope six-teen months to-day, I don't know how much long-er
2. - I've been in Eng-land, France now Ger-ma-ny, And Folks I don't know that there's

The piano accompaniment for the first two verses consists of two staves. The right hand plays chords and moving lines, while the left hand plays a bass line with chords. The key signature is one sharp (F#) and the time signature is 7/8.

The voice line continues with the lyrics for the third verse, written on a single staff in treble clef.

I must stay; But I'm a hop-ing, Don't think I'm jok-ing, I want to get back home to  
much to see; In these old towns here, To me they seem queer, May-be It's cause I'm feel-ing

The piano accompaniment for the third verse consists of two staves. The right hand plays chords and moving lines, while the left hand plays a bass line with chords. The key signature is one sharp (F#) and the time signature is 7/8.

The voice line continues with the lyrics for the fourth verse, written on a single staff in treble clef.

you. Back to my home in dear old U-S-A, Where rag-time mu-sic makes one  
blue. I'm long-ing for our good old Cab-a-rets, Be-lieve me boys those were the

The piano accompaniment for the fourth verse consists of two staves. The right hand plays chords and moving lines, while the left hand plays a bass line with chords. The key signature is one sharp (F#) and the time signature is 7/8.

start to sway; Back there with you dear, It makes me feel queer, I got those daw-gone A-mer-i-can  
happ-y days, I want to go back, To an- y old shack, Be-cause I got those A-mer-i-can

Chorus.

blues blues I've got 'em, got 'em, Law-die how I've got 'em Those A-mer-i-can blues;

When you've been a-way from home for six-teen long months, Then, you get to feel-in blue,

A lit-tle home-sick too; You sort to sigh for, cry for, and you'd near-ly die for, -Miss Lib-er-ty-

And when I get bak home, I nev-er more will roam, from you my dear old U - S - A.