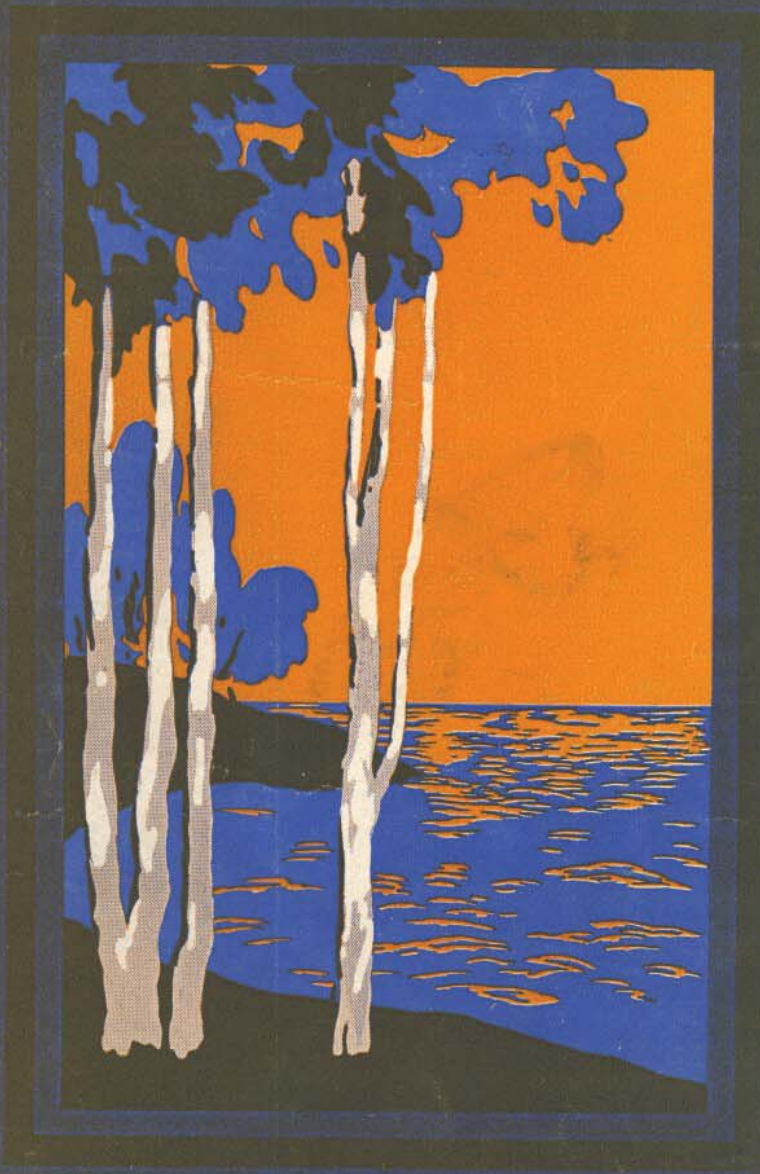


POPULAR EDITION

DOWN HONOLULU WAY

SONG



LYRIC BY
J. E. DEMPSEY

MUSIC BY
**EARL BURTNETT
AND
JOS. A. BURKE**

5

JEROME H. REMICK & CO.

NEW YORK

DETROIT

DOWN HONOLULU WAY

3

Lyric by
J. E. DEMPSEY

SONG

Music by
EARL BURNETT
and JOS. A. BURKE

Moderato

PIANO

The piano introduction is in 2/4 time, marked 'Moderato'. It begins with a treble clef and a key signature of two flats (B-flat and E-flat). The first staff contains a melody starting on G4, moving to A4, B-flat4, and C5. The second staff provides a harmonic accompaniment with chords in the right hand and single notes in the left hand. The piece concludes with a final chord in the right hand.

§ Voice

Vamp

I can see two eyes where-in the
Dream-y eyes are watch-ing on a

The vocal line begins with a rest, followed by the lyrics. The piano accompaniment features a 'Vamp' section with a rhythmic pattern of eighth notes in the right hand and chords in the left hand. The key signature remains two flats. The piano part includes a triplet of eighth notes in the right hand and a bass line with a (b) marking.

love-light gleams,
south-sea isle, -

In my dreams,
All the while, -

in my dreams.
all the while. -

The piano accompaniment continues with a similar rhythmic pattern. It features a triplet of eighth notes in the right hand and a bass line with a (b) marking. The key signature remains two flats.

I can hear a voice, as sweet as sing-ing streams, -
Pret - ty lips are wait - ing with a wist - ful smile, -

The piano accompaniment continues with a similar rhythmic pattern. It features a triplet of eighth notes in the right hand and a bass line with a (b) marking. The key signature remains two flats.

Copyright MCMXVI by JEROME H. REMICK & CO., New York & Detroit

Copyright, Canada, MCMXVI by Jerome H. Remick & Co.

Propiedad para la Republica Mexicana de Jerome H. Remick & Co. New York y Detroit. Depositada conforme a la ley

Performing rights reserved

Call-ing me,— it seems. _____ O'er the old la-agoon I see the
My heart to— be - guile. _____ Soft-er than the wa - ter in the

glow-worm play - ing, Shore-ward I can see the shelt'-ring palm trees sway - ing,
foun-tain fall - ing, Sweet-er than an an-gel's eve-'ning song en - thrall - ing,

rit.
While from a - far I can hear a gui - tar, Some-one keeps soft-ly say - ing:—
Whisp'-ring to me of a blue, sing-ing sea, Night-ly a voice keeps call - ing:—

CHORUS *Slowly*
Come where the moon is al - ways shin - ing, Down Hon - o -

lu - lu way; Come where the Palm-trees sway, Night-time is

just like day. — And, while the sweet gui-tars are ring - ing,

We'll dream the night a-way, Where the moon-beams play — on the

dis-tant bay, — Down — Hon - o - lu - lu way. — way. — *D.S.*